



PT4-S1-4X03L

www.palconnusa.com

Product Overview

The PT4-S1-4X03L of Small Form Factor Pluggable (SFP) transceiver module is specifically designed for high performance integrated duplex data link over single mode optical fiber. The high-speed laser diode and photo diode are provided as a light source and a detector, respectively. An EEPROM contained the detailed product information for the host equipment is accessed by the 2-wire serial CMOS EEPROM protocol. It complies with SFP MSA, SONET/SDH standards, Class 1 laser products, EN60825, and EN60950.

Features

- RoHS Compliant
- Operation Temperature: -40~+85°C
- 1310nm uncooled LD
- 10, 20, 40Km link distance_(indicative only) by different module.
PT4-S1-4103L: 10Km
PT4-S1-4203L: 20Km
PT4-S1-4403L: 40Km
- Hot pluggable
- Metal enclosure, low EMI
- Single 3.3V power supply
- Low Power Dissipation

Applications

- Metro Access Rings
- Point-to-Point networking
- 1x Fiber Channel
- Gigabit Ethernet
- Suitable for Fast Ethernet and OC-12

Ordering Information

P	T	4	-	S	1	-	4	X	0	3	L																																																																												
a	b			X			c	d	e	f		g	h																																																																										
<table border="1"> <tr> <td rowspan="6">Function parameter</td> <td>P</td> <td>may be Blank, or 000~999→ Digital length (unit : cm)</td> </tr> <tr> <td>C</td> <td>may be Blank, or 0~9 → Case Color (1: Blue)</td> </tr> <tr> <td>B</td> <td>Case Color Black + Shield Backward</td> </tr> <tr> <td>S</td> <td>F Case Color Black + Shield Forward</td> </tr> <tr> <td>X</td> <td>Case Color Black + Shield</td> </tr> <tr> <td>0</td> <td>Case Color Blue + Shield Backward(Non Lead pin)</td> </tr> <tr> <td>1</td> <td>Case Color Blue + Shield Forward</td> </tr> <tr> <td>W</td> <td>2 Case Color Blue + Shield Backward ,Lead pin X 6 (TB:Half Shield ,Lead pin X 6)</td> </tr> <tr> <td>3</td> <td>Case Color Blue + Full Shield Backward,Lead pin X 4</td> </tr> <tr> <td>4</td> <td>Case Color Black + Full Shield Backward,Lead pin X 6</td> </tr> </table>															Function parameter	P	may be Blank, or 000~999→ Digital length (unit : cm)	C	may be Blank, or 0~9 → Case Color (1: Blue)	B	Case Color Black + Shield Backward	S	F Case Color Black + Shield Forward	X	Case Color Black + Shield	0	Case Color Blue + Shield Backward(Non Lead pin)	1	Case Color Blue + Shield Forward	W	2 Case Color Blue + Shield Backward ,Lead pin X 6 (TB:Half Shield ,Lead pin X 6)	3	Case Color Blue + Full Shield Backward,Lead pin X 4	4	Case Color Black + Full Shield Backward,Lead pin X 6																																																				
Function parameter	P	may be Blank, or 000~999→ Digital length (unit : cm)																																																																																					
	C	may be Blank, or 0~9 → Case Color (1: Blue)																																																																																					
	B	Case Color Black + Shield Backward																																																																																					
	S	F Case Color Black + Shield Forward																																																																																					
	X	Case Color Black + Shield																																																																																					
	0	Case Color Blue + Shield Backward(Non Lead pin)																																																																																					
1	Case Color Blue + Shield Forward																																																																																						
W	2 Case Color Blue + Shield Backward ,Lead pin X 6 (TB:Half Shield ,Lead pin X 6)																																																																																						
3	Case Color Blue + Full Shield Backward,Lead pin X 4																																																																																						
4	Case Color Black + Full Shield Backward,Lead pin X 6																																																																																						
<table border="1"> <tr> <td>Function distinction</td> <td>may be Blank, or P (P→ Pigtail), or C(Case Color), or S (S→ Shield), or W (W→ Composite Specifications), or F(F→POF), or IJ→DDMI)</td> </tr> </table>															Function distinction	may be Blank, or P (P→ Pigtail), or C(Case Color), or S (S→ Shield), or W (W→ Composite Specifications), or F(F→POF), or IJ→DDMI)																																																																							
Function distinction	may be Blank, or P (P→ Pigtail), or C(Case Color), or S (S→ Shield), or W (W→ Composite Specifications), or F(F→POF), or IJ→DDMI)																																																																																						
<table border="1"> <tr> <td rowspan="12">Potential energy & temperature</td> <td>A</td> <td>→AC/AC PECL</td> <td>0°C~70°C</td> <td>I</td> <td>→AC/AC PECL</td> <td>0°C~70°C</td> <td>RoHS</td> </tr> <tr> <td>B</td> <td>→AC/AC PECL</td> <td>-40°C~85°C</td> <td>J</td> <td>→AC/AC PECL</td> <td>-40°C~85°C</td> <td>RoHS</td> </tr> <tr> <td>C</td> <td>→AC/AC TTL</td> <td>0°C~70°C</td> <td>K</td> <td>→AC/AC TTL</td> <td>0°C~70°C</td> <td>RoHS</td> </tr> <tr> <td>D</td> <td>→AC/AC TTL</td> <td>-40°C~85°C</td> <td>L</td> <td>→AC/AC TTL</td> <td>-40°C~85°C</td> <td>RoHS</td> </tr> <tr> <td>E</td> <td>→DC/DC PECL</td> <td>0°C~70°C</td> <td>M</td> <td>→DC/DC PECL</td> <td>0°C~70°C</td> <td>RoHS</td> </tr> <tr> <td>F</td> <td>→DC/DC PECL</td> <td>-40°C~85°C</td> <td>N</td> <td>→DC/DC PECL</td> <td>-40°C~85°C</td> <td>RoHS</td> </tr> <tr> <td>G</td> <td>→DC/DC TTL</td> <td>0°C~70°C</td> <td>O</td> <td>→DC/DC TTL</td> <td>0°C~70°C</td> <td>RoHS</td> </tr> <tr> <td>H</td> <td>→DC/DC TTL</td> <td>-40°C~85°C</td> <td>P</td> <td>→DC/DC TTL</td> <td>-40°C~85°C</td> <td>RoHS</td> </tr> <tr> <td>Q</td> <td>→AC/AC TTL</td> <td>-10°C~85°C</td> <td>RoHS</td> <td>R</td> <td>→DC/DC PECL</td> <td>-10°C~85°C</td> <td>RoHS</td> </tr> <tr> <td>W</td> <td>→DC/AC TTL</td> <td>0°C~70°C</td> <td>RoHS</td> <td>X</td> <td>→DC/AC TTL</td> <td>-40°C~85°C</td> <td>RoHS</td> </tr> </table>															Potential energy & temperature	A	→AC/AC PECL	0°C~70°C	I	→AC/AC PECL	0°C~70°C	RoHS	B	→AC/AC PECL	-40°C~85°C	J	→AC/AC PECL	-40°C~85°C	RoHS	C	→AC/AC TTL	0°C~70°C	K	→AC/AC TTL	0°C~70°C	RoHS	D	→AC/AC TTL	-40°C~85°C	L	→AC/AC TTL	-40°C~85°C	RoHS	E	→DC/DC PECL	0°C~70°C	M	→DC/DC PECL	0°C~70°C	RoHS	F	→DC/DC PECL	-40°C~85°C	N	→DC/DC PECL	-40°C~85°C	RoHS	G	→DC/DC TTL	0°C~70°C	O	→DC/DC TTL	0°C~70°C	RoHS	H	→DC/DC TTL	-40°C~85°C	P	→DC/DC TTL	-40°C~85°C	RoHS	Q	→AC/AC TTL	-10°C~85°C	RoHS	R	→DC/DC PECL	-10°C~85°C	RoHS	W	→DC/AC TTL	0°C~70°C	RoHS	X	→DC/AC TTL	-40°C~85°C	RoHS
Potential energy & temperature	A	→AC/AC PECL	0°C~70°C	I	→AC/AC PECL	0°C~70°C	RoHS																																																																																
	B	→AC/AC PECL	-40°C~85°C	J	→AC/AC PECL	-40°C~85°C	RoHS																																																																																
	C	→AC/AC TTL	0°C~70°C	K	→AC/AC TTL	0°C~70°C	RoHS																																																																																
	D	→AC/AC TTL	-40°C~85°C	L	→AC/AC TTL	-40°C~85°C	RoHS																																																																																
	E	→DC/DC PECL	0°C~70°C	M	→DC/DC PECL	0°C~70°C	RoHS																																																																																
	F	→DC/DC PECL	-40°C~85°C	N	→DC/DC PECL	-40°C~85°C	RoHS																																																																																
	G	→DC/DC TTL	0°C~70°C	O	→DC/DC TTL	0°C~70°C	RoHS																																																																																
	H	→DC/DC TTL	-40°C~85°C	P	→DC/DC TTL	-40°C~85°C	RoHS																																																																																
	Q	→AC/AC TTL	-10°C~85°C	RoHS	R	→DC/DC PECL	-10°C~85°C	RoHS																																																																															
	W	→DC/AC TTL	0°C~70°C	RoHS	X	→DC/AC TTL	-40°C~85°C	RoHS																																																																															
	<table border="1"> <tr> <td>Operating voltage</td> <td>3→3.3V</td> <td>5→5V</td> </tr> </table>															Operating voltage	3→3.3V	5→5V																																																																					
	Operating voltage	3→3.3V	5→5V																																																																																				
<table border="1"> <tr> <td>Distance</td> <td>D1~D9 : D1→100M, D2→200M</td> <td>01~99 : 01→1km, 10→10km</td> <td>00→100km</td> </tr> </table>															Distance	D1~D9 : D1→100M, D2→200M	01~99 : 01→1km, 10→10km	00→100km																																																																					
Distance	D1~D9 : D1→100M, D2→200M	01~99 : 01→1km, 10→10km	00→100km																																																																																				
<table border="1"> <tr> <td>Optical connector</td> <td>1→FC</td> <td>2→SC</td> <td>3→ST</td> <td>4→LC</td> </tr> </table>															Optical connector	1→FC	2→SC	3→ST	4→LC																																																																				
Optical connector	1→FC	2→SC	3→ST	4→LC																																																																																			
<table border="1"> <tr> <td rowspan="2">Wavelength</td> <td>M3</td> <td>→Multi-mode 850 nm</td> <td>S1</td> <td>→Single-mode 1310 nm</td> <td>S3</td> <td>→For Bi-direction : Single-mode Tx1310 / Rx1550 nm</td> </tr> <tr> <td>M4</td> <td>→Multi-mode 1310 nm</td> <td>S2</td> <td>→Single-mode 1550 nm</td> <td>S4</td> <td>→For Bi-direction : Single-mode Tx1550 / Rx1310 nm</td> </tr> <tr> <td colspan="3">00~99 (CWDM Wavelength) : 47 → 1470 nm , 61 → 1610 nm</td> <td colspan="3">S5</td> <td>→For Bi-direction : Single-mode Tx1310 / Rx1490 nm</td> </tr> <tr> <td colspan="3"></td> <td colspan="3">S6</td> <td>→For Bi-direction : Single-mode Tx1490 / Rx1550nm</td> </tr> </table>															Wavelength	M3	→Multi-mode 850 nm	S1	→Single-mode 1310 nm	S3	→For Bi-direction : Single-mode Tx1310 / Rx1550 nm	M4	→Multi-mode 1310 nm	S2	→Single-mode 1550 nm	S4	→For Bi-direction : Single-mode Tx1550 / Rx1310 nm	00~99 (CWDM Wavelength) : 47 → 1470 nm , 61 → 1610 nm			S5			→For Bi-direction : Single-mode Tx1310 / Rx1490 nm				S6			→For Bi-direction : Single-mode Tx1490 / Rx1550nm																																														
Wavelength	M3	→Multi-mode 850 nm	S1	→Single-mode 1310 nm	S3	→For Bi-direction : Single-mode Tx1310 / Rx1550 nm																																																																																	
	M4	→Multi-mode 1310 nm	S2	→Single-mode 1550 nm	S4	→For Bi-direction : Single-mode Tx1550 / Rx1310 nm																																																																																	
00~99 (CWDM Wavelength) : 47 → 1470 nm , 61 → 1610 nm			S5			→For Bi-direction : Single-mode Tx1310 / Rx1490 nm																																																																																	
			S6			→For Bi-direction : Single-mode Tx1490 / Rx1550nm																																																																																	
<table border="1"> <tr> <td rowspan="2">Bit rate</td> <td>1</td> <td>→155Mbps</td> <td>3</td> <td>→1.0625Gbps</td> <td>5</td> <td>→2.125 Gbps</td> <td>7</td> <td>→2.7 Gbps</td> </tr> <tr> <td>2</td> <td>→622Mbps</td> <td>4</td> <td>→1.25 Gbps</td> <td>6</td> <td>→2.5 Gbps</td> <td>8</td> <td>→3.125 Gbps</td> </tr> </table>															Bit rate	1	→155Mbps	3	→1.0625Gbps	5	→2.125 Gbps	7	→2.7 Gbps	2	→622Mbps	4	→1.25 Gbps	6	→2.5 Gbps	8	→3.125 Gbps																																																								
Bit rate	1	→155Mbps	3	→1.0625Gbps	5	→2.125 Gbps	7	→2.7 Gbps																																																																															
	2	→622Mbps	4	→1.25 Gbps	6	→2.5 Gbps	8	→3.125 Gbps																																																																															
<table border="1"> <tr> <td rowspan="6">Electric connector</td> <td>TR</td> <td>→Dual Fiber 1×9 Transceiver</td> <td>FB</td> <td>→Single Fiber SFP Transceiver</td> <td>EUFB</td> <td>→ EPON ONU SFF 2×5 BIDI Transceiver</td> </tr> <tr> <td>TB</td> <td>→Single Fiber 1×9 Transceiver</td> <td>PT</td> <td>→Dual Fiber SFP Transceiver</td> <td>ETFB</td> <td>→ EPON OLT SFF 2×5 BIDI Transceiver</td> </tr> <tr> <td>FT</td> <td>→Dual Fiber SFP Transceiver</td> <td>PB</td> <td>→Single Fiber SFP Transceiver</td> <td>GUFB</td> <td>→ GPON ONU SFF 2×5 BIDI Transceiver</td> </tr> <tr> <td>UB</td> <td>→Dual Bi-Direction SFP Transceiver (OM PIN Assignment)</td> <td></td> <td></td> <td>GTFB</td> <td>→ GPON OLT SFF 2×5 BIDI Transceiver</td> </tr> <tr> <td>UM</td> <td>→Dual Bi-Direction SFP Transceiver(CSFP MSA)</td> <td></td> <td></td> <td>GUFM</td> <td>→GPON OLT SFF 2×5 BIDI Transceiver(DDMI)</td> </tr> <tr> <td>PM</td> <td>→Dual Fiber SFP Transceiver (with optical monitor)</td> <td></td> <td></td> <td></td> <td></td> </tr> </table>															Electric connector	TR	→Dual Fiber 1×9 Transceiver	FB	→Single Fiber SFP Transceiver	EUFB	→ EPON ONU SFF 2×5 BIDI Transceiver	TB	→Single Fiber 1×9 Transceiver	PT	→Dual Fiber SFP Transceiver	ETFB	→ EPON OLT SFF 2×5 BIDI Transceiver	FT	→Dual Fiber SFP Transceiver	PB	→Single Fiber SFP Transceiver	GUFB	→ GPON ONU SFF 2×5 BIDI Transceiver	UB	→Dual Bi-Direction SFP Transceiver (OM PIN Assignment)			GTFB	→ GPON OLT SFF 2×5 BIDI Transceiver	UM	→Dual Bi-Direction SFP Transceiver(CSFP MSA)			GUFM	→GPON OLT SFF 2×5 BIDI Transceiver(DDMI)	PM	→Dual Fiber SFP Transceiver (with optical monitor)																																								
Electric connector	TR	→Dual Fiber 1×9 Transceiver	FB	→Single Fiber SFP Transceiver	EUFB	→ EPON ONU SFF 2×5 BIDI Transceiver																																																																																	
	TB	→Single Fiber 1×9 Transceiver	PT	→Dual Fiber SFP Transceiver	ETFB	→ EPON OLT SFF 2×5 BIDI Transceiver																																																																																	
	FT	→Dual Fiber SFP Transceiver	PB	→Single Fiber SFP Transceiver	GUFB	→ GPON ONU SFF 2×5 BIDI Transceiver																																																																																	
	UB	→Dual Bi-Direction SFP Transceiver (OM PIN Assignment)			GTFB	→ GPON OLT SFF 2×5 BIDI Transceiver																																																																																	
	UM	→Dual Bi-Direction SFP Transceiver(CSFP MSA)			GUFM	→GPON OLT SFF 2×5 BIDI Transceiver(DDMI)																																																																																	
	PM	→Dual Fiber SFP Transceiver (with optical monitor)																																																																																					

* Please contact us for the released types



PT4-S1-4X03L

www.palconnusa.com

Absolute Maximum Ratings

Parameter	Symbol	Min.	Typ.	Max.	Unit	Note
Storage Temperature	T_S	-55		95	°C	
Supply Voltage	$V_{CC,T}$ $V_{CC,R}$	0		5.5	V	
Relative Humidity	RH	0		85	%	

Recommended Operating Conditions

Parameter	Symbol	Min.	Typ.	Max.	Unit	Note
Operating Temperature	T_{OP}	-40		85	°C	
Supply Voltage	$V_{CC,T,R}$	3.1	3.3	3.5	V	
Supply Current	$I_{TX} + I_{RX}$		200	300	mA	

Transmitter Electro-Optical Interface ($T_C = -40 \sim 85^\circ\text{C}, V_{CC,T,R} = 3.1\text{V} < V_{CC} < 3.5\text{V}$)

Parameter	Symbol	Min.	Typ.	Max.	Unit	Note
Transmitter Differential Input Voltage	TD +/-	400		2000	mVp-p	A
Optical Output Power	P _O	-9		-3	dBm	A, 10Km
		-7		-1		A, 20Km
		-2		+3		A, 40Km
Optical Extinction Ratio	E _R	9			dB	A
Center Wavelength	λ _C	1260	1310	1360	nm	A
Spectral Width	Δλ			<1	nm	A
Side Mode Suppression Ratio	SMSR			30	dB	A
Optical Rise / Fall Time	t _r / t _f			0.25	nsec	A,B
Tx_Fault - High	V _{Fault_H}	2		V _{CC}	V	A
Tx_Fault - Low	V _{Fault_L}	V _{ee}		V _{ee} +0.5	V	A
Tx_Disable - High	V _{Disable_H}	2		V _{CC}	V	A
Tx_Disable - Low	V _{Disable_L}	V _{ee}		V _{ee} +0.8	V	A

Notes:

A. All of data is measured at 1250Mbps , PRBS 2⁷-1 ,NRZ.

B: 20%~80%

Receiver Electro-Optical Interface ($T_C = -40 \sim 85^\circ\text{C}, V_{CC,T,R} = 3.1\text{V} < V_{CC} < 3.5\text{V}$)

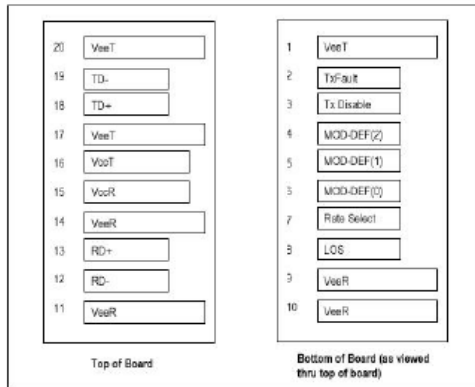
Parameter	Symbol	Min.	Typ.	Max.	Unit	Note
Receiver Differential Output Voltage	RD +/-	600	800		mV _{p-p}	
Receiver Overload	P _{IN} MAX	-3			dBm	A,B
Receiver Sensitivity	P _{IN} MIN			-24	dBm	A,B
Operating Center Wavelength	λ _C	1270		1620	nm	
Receiver LOS Assert Level	P _{RX_LOS A}	-35			dBm	B
Receiver LOS Deassert Level	P _{RX_LOS D}			-24.5	dBm	B
Receiver Loss of Signal Hysteresis		0.5	2		dB	B

Notes:

A. With BER better than or equal to 1×10⁻¹²

B. measured in the center of the eye opening with 2⁷ -1 PRBS, NRZ

Pin Description



SFP Transceiver Electric Pad Layout

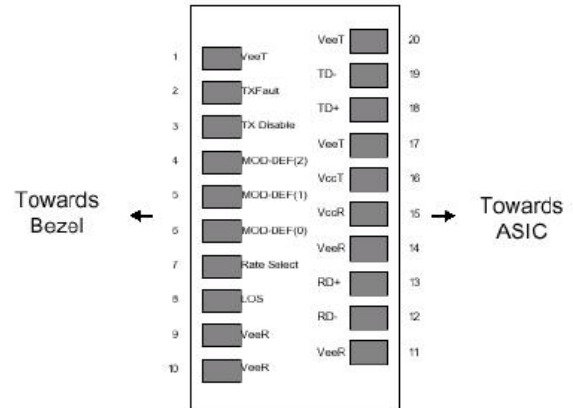


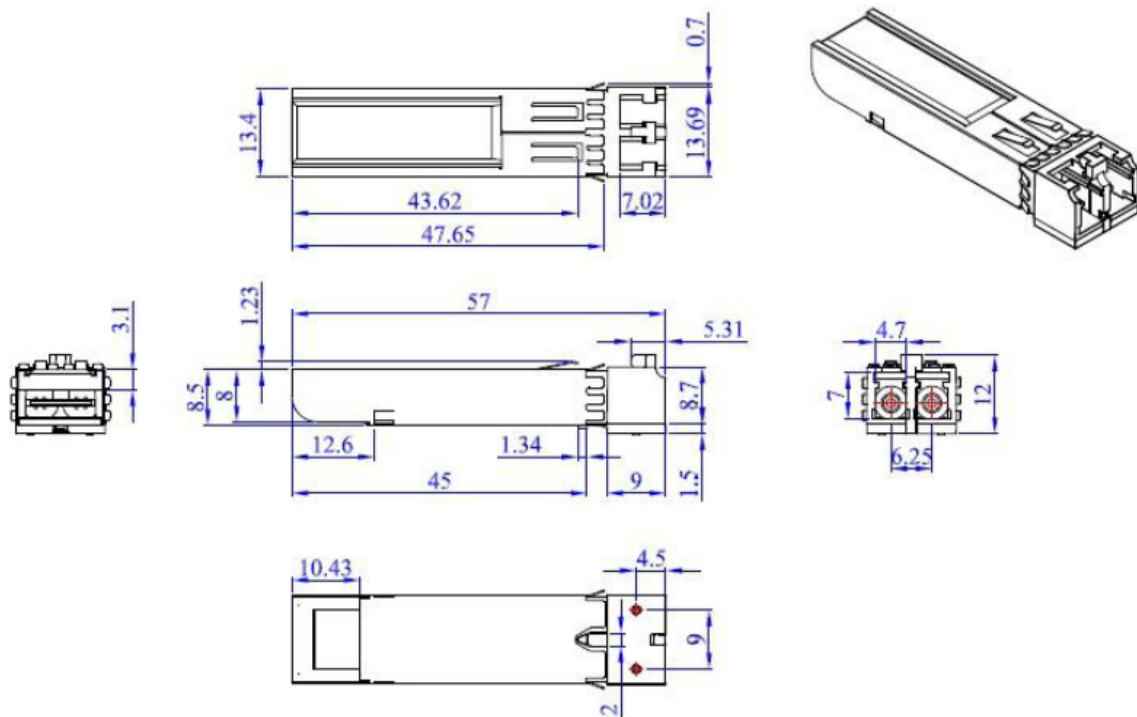
Diagram of Host Board Connector Block Pin Numbers and Names

Pin No.	Pin Name	Function	Plug Seq.	Notes
1	V _{ee} T	Transmitter Ground	1	1
2	TX Fault	Transmitter Fault Indication	3	2
3	TX Disable	Transmitter Disable	3	3
4	MOD_DEF 2	Module Definition 2	3	4
5	MOD_DEF 1	Module Definition 1	3	4
6	MOD_DEF 0	Module Definition 0	3	4
7	Rate Select	Select between full or reduced receiver bandwidth	3	5
8	LOS	Loss of Signal	3	6
9	V _{ee} R	Receiver Ground	1	1
10	V _{ee} R	Receiver Ground	1	1
11	V _{ee} R	Receiver Ground	1	1
12	RD -	Inv. Receiver Data Out	3	
13	RD +	Receiver Data Out	3	
14	V _{ee} R	Receiver Ground	1	1
15	V _{CC} R	Receiver Power	2	
16	V _{CC} T	Transmitter Power	2	
17	V _{ee} T	Transmitter Ground	1	1
18	TD +	Transmitter Data In	3	
19	TD -	Inv. Transmitter Data In	3	
20	V _{ee} T	Transmitter Ground	1	1

Note:

- 1, Circuit ground is internally isolated from chassis ground
- 2, Open-Collector outputs, asserted when LD and/or APC function fail.
- 3, Disable when high voltage (>2.0V or Open)
- 4, Should be pulled up with 4.7k – 10kohms on host board to a voltage between 2.0V and 5.5V. MOD_DEF(0) pulls line low to indicate module is plugged in.
- 5, No connection required
- 6, LOS is open collector output. Should be pulled up with 4.7k – 10kohms on host board to a voltage between 2.0V and 5.5V. Logic 0 indicates normal operation; logic 1 indicates loss of signal.

Mechanical Dimensions (Units in mm)



Application Circuit

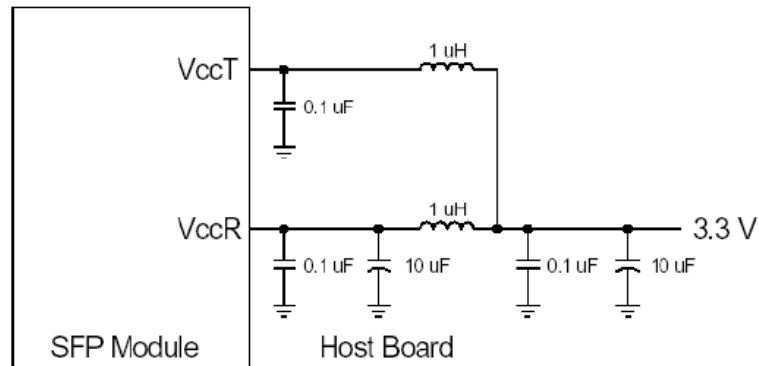


Figure 2A. Recommended Host Board Supply Filtering Network

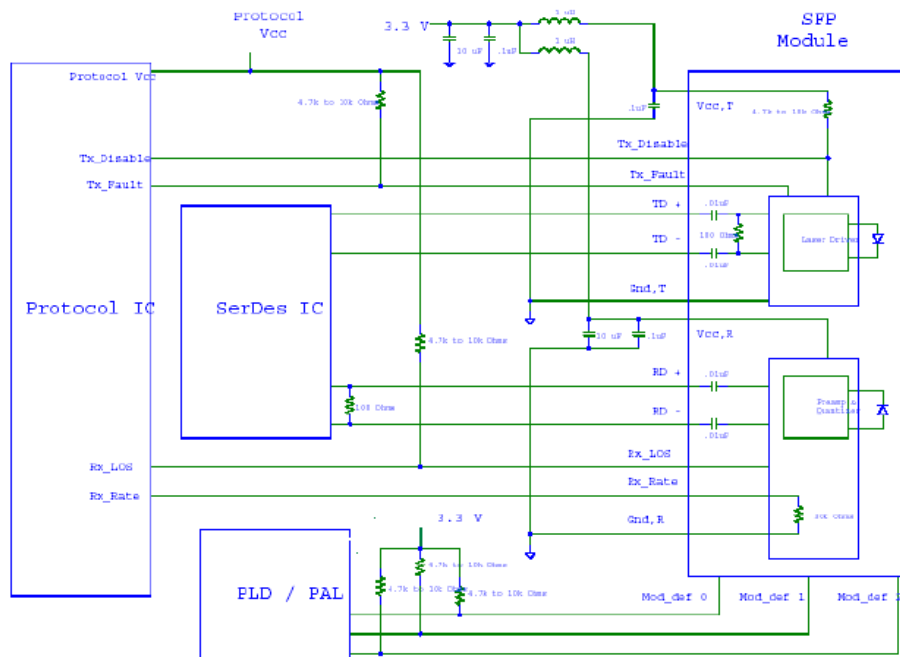


Figure 2B. Example SFP Host Board Schematic