



PT4-S2-4X03L

www.palconnusa.com

Product Overview

The PT4-S2-4X03L of Small Form Factor Pluggable (SFP) transceiver module is specifically designed for high performance integrated duplex data link over single mode optical fiber. The high-speed laser diode and photo diode are provided as a light source and a detector, respectively. An EEPROM contained the detailed product information for the host equipment is accessed by the 2-wire serial CMOS EEPROM protocol. It complies with SFP MSA, SONET/SDH standards, Class 1 laser products, EN60825, and EN60950.

Features

- RoHS Compliant
- Operation Temperature: -40~+85°C
- 1550nm uncooled LD
- 10, 20, 40Km link distance_(indicative only) by different module.
PT4-S2-4103L: 10Km
PT4-S2-4203L: 20Km
PT4-S2-4403L: 40Km
- Hot pluggable
- Metal enclosure, low EMI
- Single 3.3V power supply
- Low Power Dissipation

Applications

- Metro Access Rings
- Point-to-Point networking
- 1x Fiber Channel
- Gigabit Ethernet
- Suitable for Fast Ethernet and OC-12

Ordering Information

P	T	4	S	2	4	X	0	3	L																																																			
a	b	-	X	-	c	d	e	f	-	g	h																																																	
Function parameter										P: may be Blank, or 000~999→ Pigtail length (unit : cm) C: may be Blank, or 0~9 → Case Color (1: Blue) B: Case Color Black + Shield Backward S: F: Case Color Black + Shield Forward X: Case Color Black +Shield 0: Case Color Blue + Shield Backward(Non Lead pin) 1: Case Color Blue + Shield Forward W: 2: Case Color Blue + Shield Backward ,Lead pin X 6 (TB:Half Shield ,Lead pin X 6) 3: Case Color Blue + Full Shield Backward,Lead pin X 4 4: Case Color Black + Full Shield Backward,Lead pin X 6																																																		
Function distinction										may be Blank, or P (P→ Pigtail), or C(Case Color), or S (S→ Shield), or W (W→ Composite Specifications), or F (F→POF), or I(I→DDMI)																																																		
Potential energy & temperature										<table border="1"> <tr> <td>A→AC/AC PECL</td> <td>0°C~70°C</td> <td>I→AC/AC PECL</td> <td>0°C~70°C</td> <td>RoHS</td> </tr> <tr> <td>B→AC/AC PECL</td> <td>-40°C~85°C</td> <td>J→AC/AC PECL</td> <td>-40°C~85°C</td> <td>RoHS</td> </tr> <tr> <td>C→AC/AC TTL</td> <td>0°C~70°C</td> <td>K→AC/AC TTL</td> <td>0°C~70°C</td> <td>RoHS</td> </tr> <tr> <td>D→AC/AC TTL</td> <td>-40°C~85°C</td> <td>L→AC/AC TTL</td> <td>-40°C~85°C</td> <td>RoHS</td> </tr> <tr> <td>E→DC/DC PECL</td> <td>0°C~70°C</td> <td>M→DC/DC PECL</td> <td>0°C~70°C</td> <td>RoHS</td> </tr> <tr> <td>F→DC/DC PECL</td> <td>-40°C~85°C</td> <td>N→DC/DC PECL</td> <td>-40°C~85°C</td> <td>RoHS</td> </tr> <tr> <td>G→DC/DC TTL</td> <td>0°C~70°C</td> <td>O→DC/DC TTL</td> <td>0°C~70°C</td> <td>RoHS</td> </tr> <tr> <td>H→DC/DC TTL</td> <td>-40°C~85°C</td> <td>P→DC/DC TTL</td> <td>-40°C~85°C</td> <td>RoHS</td> </tr> <tr> <td>Q→AC/AC TTL</td> <td>-10°C~85°C</td> <td>R→DC/DC PECL</td> <td>-10°C~85°C</td> <td>RoHS</td> </tr> <tr> <td>W→DC/AC TTL</td> <td>0°C~70°C</td> <td>X→DC/AC TTL</td> <td>-40°C~85°C</td> <td>RoHS</td> </tr> </table>	A→AC/AC PECL	0°C~70°C	I→AC/AC PECL	0°C~70°C	RoHS	B→AC/AC PECL	-40°C~85°C	J→AC/AC PECL	-40°C~85°C	RoHS	C→AC/AC TTL	0°C~70°C	K→AC/AC TTL	0°C~70°C	RoHS	D→AC/AC TTL	-40°C~85°C	L→AC/AC TTL	-40°C~85°C	RoHS	E→DC/DC PECL	0°C~70°C	M→DC/DC PECL	0°C~70°C	RoHS	F→DC/DC PECL	-40°C~85°C	N→DC/DC PECL	-40°C~85°C	RoHS	G→DC/DC TTL	0°C~70°C	O→DC/DC TTL	0°C~70°C	RoHS	H→DC/DC TTL	-40°C~85°C	P→DC/DC TTL	-40°C~85°C	RoHS	Q→AC/AC TTL	-10°C~85°C	R→DC/DC PECL	-10°C~85°C	RoHS	W→DC/AC TTL	0°C~70°C	X→DC/AC TTL	-40°C~85°C	RoHS
A→AC/AC PECL	0°C~70°C	I→AC/AC PECL	0°C~70°C	RoHS																																																								
B→AC/AC PECL	-40°C~85°C	J→AC/AC PECL	-40°C~85°C	RoHS																																																								
C→AC/AC TTL	0°C~70°C	K→AC/AC TTL	0°C~70°C	RoHS																																																								
D→AC/AC TTL	-40°C~85°C	L→AC/AC TTL	-40°C~85°C	RoHS																																																								
E→DC/DC PECL	0°C~70°C	M→DC/DC PECL	0°C~70°C	RoHS																																																								
F→DC/DC PECL	-40°C~85°C	N→DC/DC PECL	-40°C~85°C	RoHS																																																								
G→DC/DC TTL	0°C~70°C	O→DC/DC TTL	0°C~70°C	RoHS																																																								
H→DC/DC TTL	-40°C~85°C	P→DC/DC TTL	-40°C~85°C	RoHS																																																								
Q→AC/AC TTL	-10°C~85°C	R→DC/DC PECL	-10°C~85°C	RoHS																																																								
W→DC/AC TTL	0°C~70°C	X→DC/AC TTL	-40°C~85°C	RoHS																																																								
Operating voltage										<table border="1"> <tr> <td>3→3.3V</td> <td>5→5V</td> </tr> </table>	3→3.3V	5→5V																																																
3→3.3V	5→5V																																																											
Distance										<table border="1"> <tr> <td>D1~D9 : D1→100M, D2→200M</td> <td>01~99 : 01→1km, 10→10km</td> <td>00→100km</td> </tr> </table>	D1~D9 : D1→100M, D2→200M	01~99 : 01→1km, 10→10km	00→100km																																															
D1~D9 : D1→100M, D2→200M	01~99 : 01→1km, 10→10km	00→100km																																																										
Optical connector										<table border="1"> <tr> <td>1→FC</td> <td>2→SC</td> <td>3→ST</td> <td>4→LC</td> </tr> </table>	1→FC	2→SC	3→ST	4→LC																																														
1→FC	2→SC	3→ST	4→LC																																																									
Wavelength										<table border="1"> <tr> <td>M3→Multi-mode 850 nm</td> <td>S1→Single-mode 1310 nm</td> <td>S3→For Bi-direction : Single-mode Tx1310 / Rx1550 nm</td> </tr> <tr> <td>M4→Multi-mode 1310 nm</td> <td>S2→Single-mode 1550 nm</td> <td>S4→For Bi-direction : Single-mode Tx1550 / Rx1310 nm</td> </tr> <tr> <td colspan="2">00~99 (CWDM Wavelength) :</td> <td>S5→For Bi-direction : Single-mode Tx1310 / Rx1490 nm</td> </tr> <tr> <td colspan="2">47 → 1470 nm , 61 → 1610 nm</td> <td>S6→For Bi-direction : Single-mode Tx1490 / Rx1550nm</td> </tr> </table>	M3→Multi-mode 850 nm	S1→Single-mode 1310 nm	S3→For Bi-direction : Single-mode Tx1310 / Rx1550 nm	M4→Multi-mode 1310 nm	S2→Single-mode 1550 nm	S4→For Bi-direction : Single-mode Tx1550 / Rx1310 nm	00~99 (CWDM Wavelength) :		S5→For Bi-direction : Single-mode Tx1310 / Rx1490 nm	47 → 1470 nm , 61 → 1610 nm		S6→For Bi-direction : Single-mode Tx1490 / Rx1550nm																																						
M3→Multi-mode 850 nm	S1→Single-mode 1310 nm	S3→For Bi-direction : Single-mode Tx1310 / Rx1550 nm																																																										
M4→Multi-mode 1310 nm	S2→Single-mode 1550 nm	S4→For Bi-direction : Single-mode Tx1550 / Rx1310 nm																																																										
00~99 (CWDM Wavelength) :		S5→For Bi-direction : Single-mode Tx1310 / Rx1490 nm																																																										
47 → 1470 nm , 61 → 1610 nm		S6→For Bi-direction : Single-mode Tx1490 / Rx1550nm																																																										
Bit rate										<table border="1"> <tr> <td>1→155Mbps</td> <td>3→1.0625Gbps</td> <td>5→2.125 Gbps</td> <td>7→2.7 Gbps</td> </tr> <tr> <td>2→622Mbps</td> <td>4→1.25 Gbps</td> <td>6→2.5 Gbps</td> <td>8→3.125 Gbps</td> </tr> </table>	1→155Mbps	3→1.0625Gbps	5→2.125 Gbps	7→2.7 Gbps	2→622Mbps	4→1.25 Gbps	6→2.5 Gbps	8→3.125 Gbps																																										
1→155Mbps	3→1.0625Gbps	5→2.125 Gbps	7→2.7 Gbps																																																									
2→622Mbps	4→1.25 Gbps	6→2.5 Gbps	8→3.125 Gbps																																																									
Electric connector										<table border="1"> <tr> <td>TR→Dual Fiber 1×9 Transceiver</td> <td>FB→Single Fiber SFF Transceiver</td> <td>EUFB→ EPON ONU SFF 2×5 BIDI Transceiver</td> </tr> <tr> <td>TB→Single Fiber 1×9 Transceiver</td> <td>PT→Dual Fiber SFP Transceiver</td> <td>ETFB→ EPON OLT SFF 2×5 BIDI Transceiver</td> </tr> <tr> <td>FT→Dual Fiber SFF Transceiver</td> <td>PB→Single Fiber SFP Transceiver</td> <td>GUFB→ GPON ONU SFF 2×5 BIDI Transceiver</td> </tr> <tr> <td>UB→Dual Bi-Direction SFP Transceiver (OM PIN Assignmant)</td> <td></td> <td>GTFB→ GPON OLT SFF 2×5 BIDI Transceiver</td> </tr> <tr> <td>UM→Dual Bi-Direction SFP Transceiver(CSFP MSA)</td> <td></td> <td>GUFM→GPON OLT SFF 2×5 BIDI Transceiver(DDMI)</td> </tr> <tr> <td>PM→Dual Fiber SFP Transceiver (with optical monitor)</td> <td></td> <td></td> </tr> </table>	TR→Dual Fiber 1×9 Transceiver	FB→Single Fiber SFF Transceiver	EUFB→ EPON ONU SFF 2×5 BIDI Transceiver	TB→Single Fiber 1×9 Transceiver	PT→Dual Fiber SFP Transceiver	ETFB→ EPON OLT SFF 2×5 BIDI Transceiver	FT→Dual Fiber SFF Transceiver	PB→Single Fiber SFP Transceiver	GUFB→ GPON ONU SFF 2×5 BIDI Transceiver	UB→Dual Bi-Direction SFP Transceiver (OM PIN Assignmant)		GTFB→ GPON OLT SFF 2×5 BIDI Transceiver	UM→Dual Bi-Direction SFP Transceiver(CSFP MSA)		GUFM→GPON OLT SFF 2×5 BIDI Transceiver(DDMI)	PM→Dual Fiber SFP Transceiver (with optical monitor)																																		
TR→Dual Fiber 1×9 Transceiver	FB→Single Fiber SFF Transceiver	EUFB→ EPON ONU SFF 2×5 BIDI Transceiver																																																										
TB→Single Fiber 1×9 Transceiver	PT→Dual Fiber SFP Transceiver	ETFB→ EPON OLT SFF 2×5 BIDI Transceiver																																																										
FT→Dual Fiber SFF Transceiver	PB→Single Fiber SFP Transceiver	GUFB→ GPON ONU SFF 2×5 BIDI Transceiver																																																										
UB→Dual Bi-Direction SFP Transceiver (OM PIN Assignmant)		GTFB→ GPON OLT SFF 2×5 BIDI Transceiver																																																										
UM→Dual Bi-Direction SFP Transceiver(CSFP MSA)		GUFM→GPON OLT SFF 2×5 BIDI Transceiver(DDMI)																																																										
PM→Dual Fiber SFP Transceiver (with optical monitor)																																																												

* Please contact us for the released types



PT4-S2-4X03L

www.palconnusa.com

Absolute Maximum Ratings

Parameter	Symbol	Min.	Typ.	Max.	Unit	Note
Storage Temperature	T_S	-55		95	°C	
Supply Voltage	V_{CCT} V_{CCR}	0		5.5	V	
Relative Humidity	RH	0		85	%	

Recommended Operating Conditions

Parameter	Symbol	Min.	Typ.	Max.	Unit	Note
Operating Temperature	T_{OP}	-40		85	°C	
Supply Voltage	$V_{CCT,R}$	3.1	3.3	3.5	V	
Supply Current	$I_{TX} + I_{RX}$		200	300	mA	

Transmitter Electro-Optical Interface ($T_C = -40 \sim 85^\circ\text{C}$, $V_{CC,T,R} = 3.1\text{V} < V_{CC} < 3.5\text{V}$)

Parameter	Symbol	Min.	Typ.	Max.	Unit	Note
Transmitter Differential Input Voltage	TD +/-	400		2000	mVp-p	A
Optical Output Power	P _O	-9		-3	dBm	A, 10Km
		-7		-1		A, 20Km
		-2		+3		A, 40Km
Optical Extinction Ratio	E _R	9			dB	A
Center Wavelength	λ _C	1520	1550	1580	nm	A
Spectral Width	Δλ			<1	nm	A
Side Mode Suppression Ratio	SMSR			30	dB	A
Optical Rise / Fall Time	t _r / t _f			0.25	nsec	A,B
Tx_Fault - High	V _{Fault_H}	2		V _{CC}	V	A
Tx_Fault - Low	V _{Fault_L}	V _{ee}		V _{ee} +0.5	V	A
Tx_Disable - High	V _{Disable_H}	2		V _{CC}	V	A
Tx_Disable - Low	V _{Disable_L}	V _{ee}		V _{ee} +0.8	V	A

Notes:

A. All of data is measured at 1250Mbps , PRBS 2⁷-1 ,NRZ.

B: 20%~80%

Receiver Electro-Optical Interface ($T_C = -40 \sim 85^\circ\text{C}$, $V_{CC,T,R} = 3.1\text{V} < V_{CC} < 3.5\text{V}$)

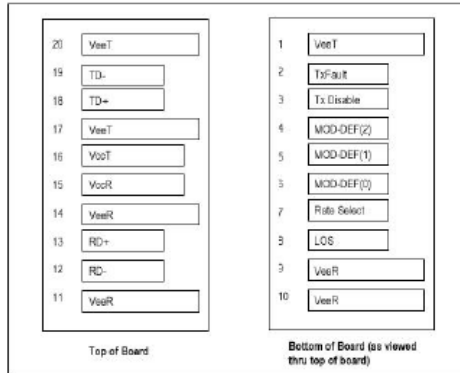
Parameter	Symbol	Min.	Typ.	Max.	Unit	Note
Receiver Differential Output Voltage	RD +/-	600	800		mVp-p	
Receiver Overload	P _{IN} MAX	-3			dBm	A,B
Receiver Sensitivity	P _{IN} MIN			-24	dBm	A,B
Operating Center Wavelength	λ _C	1270		1620	nm	
Receiver LOS Assert Level	P _{RX_LOS A}	-35			dBm	B
Receiver LOS Deassert Level	P _{RX_LOS D}			-24.5	dBm	B
Receiver Loss of Signal Hysteresis		0.5	2		dB	B

Notes:

A. With BER better than or equal to 1×10^{-12}

B. measured in the center of the eye opening with 2⁷ -1 PRBS, NRZ

Pin Description



SFP Transceiver Electric Pad Layout

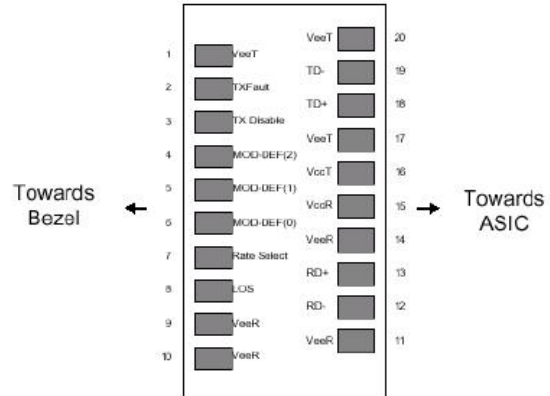


Diagram of Host Board Connector Block Pin Numbers and Names



PT4-S2-4X03L

www.palconnusa.com

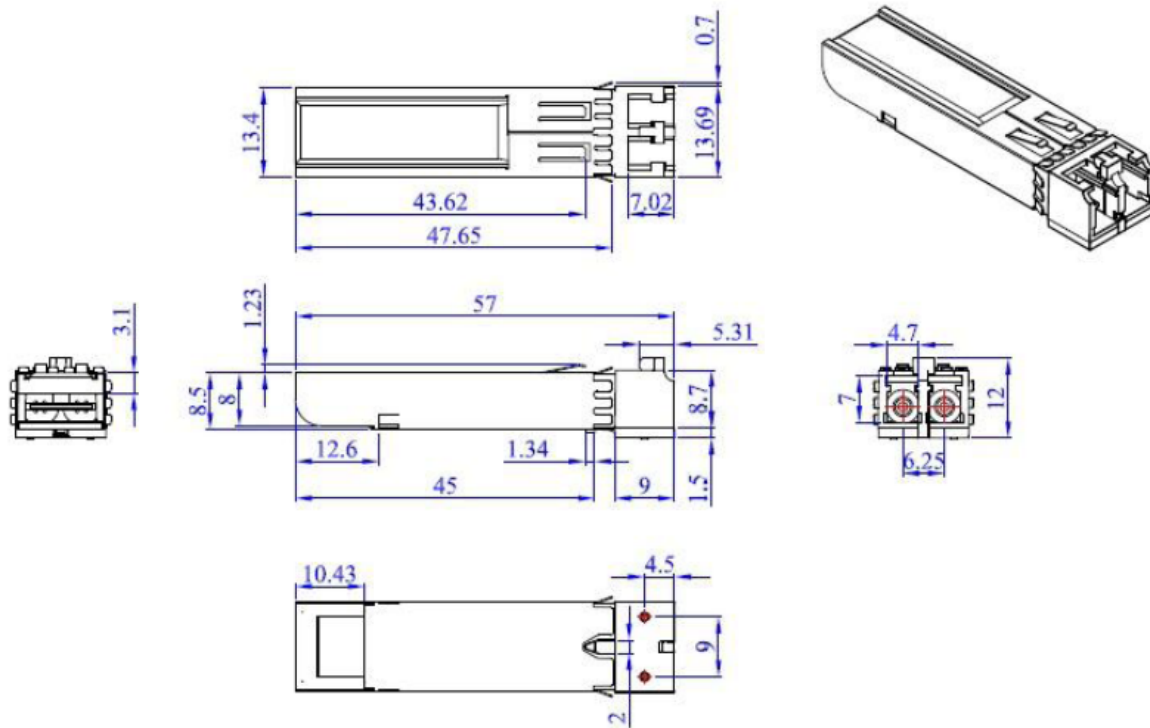
Pin No.	Pin Name	Function	Plug Seq.	Notes
1	V _{ee} T	Transmitter Ground	1	1
2	TX Fault	Transmitter Fault Indication	3	2
3	TX Disable	Transmitter Disable	3	3
4	MOD_DEF 2	Module Definition 2	3	4
5	MOD_DEF 1	Module Definition 1	3	4
6	MOD_DEF 0	Module Definition 0	3	4
7	Rate Select	Select between full or reduced receiver bandwidth	3	5
8	LOS	Loss of Signal	3	6
9	V _{ee} R	Receiver Ground	1	1
10	V _{ee} R	Receiver Ground	1	1
11	V _{ee} R	Receiver Ground	1	1
12	RD -	Inv. Receiver Data Out	3	
13	RD +	Receiver Data Out	3	
14	V _{ee} R	Receiver Ground	1	1
15	V _{cc} R	Receiver Power	2	
16	V _{cc} T	Transmitter Power	2	
17	V _{ee} T	Transmitter Ground	1	1
18	TD +	Transmitter Data In	3	
19	TD -	Inv. Transmitter Data In	3	
20	V _{ee} T	Transmitter Ground	1	1

Note:

- 1, Circuit ground is internally isolated from chassis ground
- 2, Open-Collector outputs, asserted when LD and/or APC function fail.
- 3, Disable when high voltage (>2.0V or Open)
- 4, Should be pulled up with 4.7k – 10kohms on host board to a voltage between 2.0V and 5.5V. MOD_DEF(0) pulls line low to indicate module is plugged in.
- 5, No connection required
- 6, LOS is open collector output. Should be pulled up with 4.7k – 10kohms on host board to a voltage between 2.0V and 5.5V. Logic 0 indicates normal operation; logic 1 indicates loss of signal.

PT4-S2-4X03L

Mechanical Dimensions (Units in mm)



Application Circuit

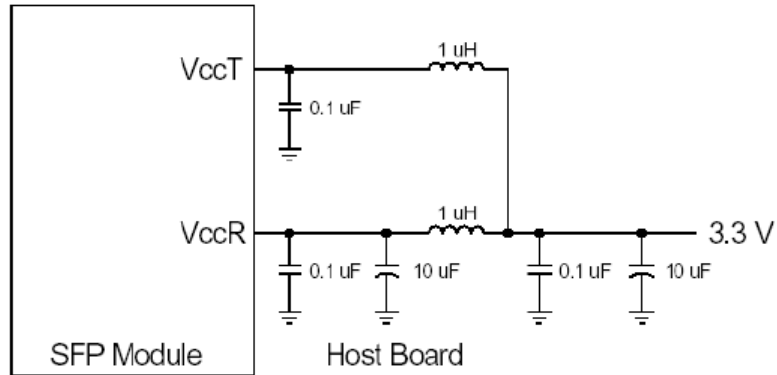


Figure 2A. Recommended Host Board Supply Filtering Network

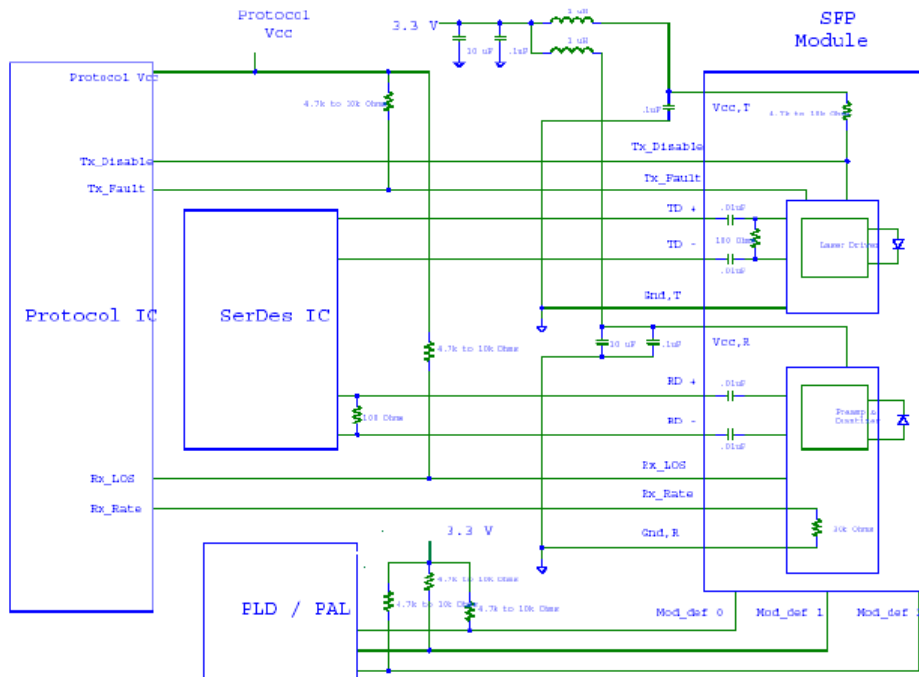


Figure 2B. Example SFP Host Board Schematic