

PT6-M3-4D53Q

Description

The PT6-M3-4D53Q of Small Form Factor Pluggable (SFP) transceiver module is specifically designed for high performance integrated duplex data link over multi mode optical fiber. The high-speed oxide VCSEL and photo diode are provided as a light source and a detector, respectively. An EEPROM contained the detailed product information for the host equipment is accessed by the 2-wire serial CMOS EEPROM protocol. It complies with SFP MSA, SONET/SDH standards, Class 1 laser products, EN60825, and EN60950.



Features

- Operation Temperature: -10°C~85°C
- 850nm oxide VCSEL
- 500m link distance, 50/125 um, 2000MHz · Km
- Hot pluggable
- Metal enclosure, low EMI
- Single 3.3V power supply
- Low Power Dissipation

Applications

- Metro Access Rings
- Point-to-Point networking
- 1x Fiber Channel
- 2.5Gbps data rate
- Suitable for Fast Ethernet and OC-12

Absolute Maximum Ratings

Parameter	Symbol	Min.	Typ.	Max.	Unit	Note
Storage Temperature	T _S	-40		+85	°C	
Supply Voltage	V _{CC} T V _{CC} R	0		5.5	V	
Relative Humidity	RH	0		85	%	

Recommended Operating Conditions

Parameter	Symbol	Min.	Typ.	Max.	Unit	Note
Operating Temperature	T _{OP}	-10		85	°C	
Supply Voltage	V _{CC} T,R	3.1	3.3	3.5	V	
Supply Current	I _{TX} + I _{RX}		200	300	mA	

PT6-M3-4D53Q

Ordering Information

P	T	6	-	M	3	-	4	D	5	3	Q																																										
a	b		X	c	d	e	f	g	h																																												
<table border="1"> <tr> <td rowspan="5">Function parameter</td> <td>P:</td> <td>may be Blank, or 000~999→ Pigtail length (unit : cm)</td> </tr> <tr> <td>C:</td> <td>or 0-9 → Case Color (0: Black, 1: Blue)</td> </tr> <tr> <td>S:</td> <td>or B/F→ Shield (B: Backward , F: Forward ,X:Non)</td> </tr> <tr> <td>1-4</td> <td>→ Composite Specifications</td> </tr> <tr> <td>1:</td> <td>Case Color Blue + Shield Forward</td> </tr> <tr> <td>W:</td> <td>2: Case Color Blue + Shield Backward, Lead pin X 6 (TB: Half Shield, Lead pin X 6)</td> </tr> <tr> <td></td> <td>3:</td> <td>Case Color Blue + Full Shield Backward, Lead pin X 4</td> </tr> <tr> <td></td> <td>4:</td> <td>Case Color Black + Full Shield Backward, Lead pin X 6</td> </tr> </table>																	Function parameter	P:	may be Blank, or 000~999→ Pigtail length (unit : cm)	C:	or 0-9 → Case Color (0: Black, 1: Blue)	S:	or B/F→ Shield (B: Backward , F: Forward ,X:Non)	1-4	→ Composite Specifications	1:	Case Color Blue + Shield Forward	W:	2: Case Color Blue + Shield Backward, Lead pin X 6 (TB: Half Shield, Lead pin X 6)		3:	Case Color Blue + Full Shield Backward, Lead pin X 4		4:	Case Color Black + Full Shield Backward, Lead pin X 6																		
Function parameter	P:	may be Blank, or 000~999→ Pigtail length (unit : cm)																																																			
	C:	or 0-9 → Case Color (0: Black, 1: Blue)																																																			
	S:	or B/F→ Shield (B: Backward , F: Forward ,X:Non)																																																			
	1-4	→ Composite Specifications																																																			
	1:	Case Color Blue + Shield Forward																																																			
W:	2: Case Color Blue + Shield Backward, Lead pin X 6 (TB: Half Shield, Lead pin X 6)																																																				
	3:	Case Color Blue + Full Shield Backward, Lead pin X 4																																																			
	4:	Case Color Black + Full Shield Backward, Lead pin X 6																																																			
<table border="1"> <tr> <td>Function distinction</td> <td colspan="2">may be Blank, or P (P→ Pigtail), or C(Case Color), or S (S→ Shield), or W (W→ Composite Specifications), or F (F→POF), or I(L→DDMI)</td> </tr> </table>																	Function distinction	may be Blank, or P (P→ Pigtail), or C(Case Color), or S (S→ Shield), or W (W→ Composite Specifications), or F (F→POF), or I(L→DDMI)																																			
Function distinction	may be Blank, or P (P→ Pigtail), or C(Case Color), or S (S→ Shield), or W (W→ Composite Specifications), or F (F→POF), or I(L→DDMI)																																																				
<table border="1"> <tr> <td rowspan="6">Potential energy & temperature</td> <td>I→AC/AC PECL</td> <td>0℃~70℃</td> <td>RoHS</td> <td>W→DC/AC TTL</td> <td>0℃~70℃</td> <td>RoHS</td> </tr> <tr> <td>J→AC/AC PECL</td> <td>-40℃~85℃</td> <td>RoHS</td> <td>N→DC/DC PECL</td> <td>-40℃~85℃</td> <td>RoHS</td> </tr> <tr> <td>K→AC/AC TTL</td> <td>0℃~70℃</td> <td>RoHS</td> <td>O→DC/DC TTL</td> <td>0℃~70℃</td> <td>RoHS</td> </tr> <tr> <td>L→AC/AC TTL</td> <td>-40℃~85℃</td> <td>RoHS</td> <td>P→DC/DC TTL</td> <td>-40℃~85℃</td> <td>RoHS</td> </tr> <tr> <td>M→DC/DC PECL</td> <td>0℃~70℃</td> <td>RoHS</td> <td>R→DC/DC PECL</td> <td>-10℃~85℃</td> <td>RoHS</td> </tr> <tr> <td>Q→AC/AC TTL</td> <td>-10℃~85℃</td> <td>RoHS</td> <td>X→DC/AC TTL</td> <td>-40℃~85℃</td> <td>RoHS</td> </tr> </table>																	Potential energy & temperature	I→AC/AC PECL	0℃~70℃	RoHS	W→DC/AC TTL	0℃~70℃	RoHS	J→AC/AC PECL	-40℃~85℃	RoHS	N→DC/DC PECL	-40℃~85℃	RoHS	K→AC/AC TTL	0℃~70℃	RoHS	O→DC/DC TTL	0℃~70℃	RoHS	L→AC/AC TTL	-40℃~85℃	RoHS	P→DC/DC TTL	-40℃~85℃	RoHS	M→DC/DC PECL	0℃~70℃	RoHS	R→DC/DC PECL	-10℃~85℃	RoHS	Q→AC/AC TTL	-10℃~85℃	RoHS	X→DC/AC TTL	-40℃~85℃	RoHS
Potential energy & temperature	I→AC/AC PECL	0℃~70℃	RoHS	W→DC/AC TTL	0℃~70℃	RoHS																																															
	J→AC/AC PECL	-40℃~85℃	RoHS	N→DC/DC PECL	-40℃~85℃	RoHS																																															
	K→AC/AC TTL	0℃~70℃	RoHS	O→DC/DC TTL	0℃~70℃	RoHS																																															
	L→AC/AC TTL	-40℃~85℃	RoHS	P→DC/DC TTL	-40℃~85℃	RoHS																																															
	M→DC/DC PECL	0℃~70℃	RoHS	R→DC/DC PECL	-10℃~85℃	RoHS																																															
	Q→AC/AC TTL	-10℃~85℃	RoHS	X→DC/AC TTL	-40℃~85℃	RoHS																																															
<table border="1"> <tr> <td>Operating voltage</td> <td>3→3.3V</td> <td>5→5V</td> </tr> </table>																	Operating voltage	3→3.3V	5→5V																																		
Operating voltage	3→3.3V	5→5V																																																			
<table border="1"> <tr> <td>Distance</td> <td>D1~D9 : D1→100M, D2→200M</td> <td>01~99 : 01→1km, 10→10km</td> <td>00→100km</td> </tr> </table>																	Distance	D1~D9 : D1→100M, D2→200M	01~99 : 01→1km, 10→10km	00→100km																																	
Distance	D1~D9 : D1→100M, D2→200M	01~99 : 01→1km, 10→10km	00→100km																																																		
<table border="1"> <tr> <td>Optical connector</td> <td>1→FC</td> <td>2→SC</td> <td>3→ST</td> <td>4→LC</td> </tr> </table>																	Optical connector	1→FC	2→SC	3→ST	4→LC																																
Optical connector	1→FC	2→SC	3→ST	4→LC																																																	
<table border="1"> <tr> <td rowspan="4">Wavelength</td> <td>M3→Multi-mode 850 nm</td> <td>S1→Single-mode 1310 nm</td> <td>S3→For Bi-direction : Single-mode Tx1310 / Rx1550 nm</td> </tr> <tr> <td>M4→Multi-mode 1310 nm</td> <td>S2→Single-mode 1550 nm</td> <td>S4→For Bi-direction : Single-mode Tx1550 / Rx1310 nm</td> </tr> <tr> <td>00-99 (CWDM Wavelength)</td> <td></td> <td>S5→For Bi-direction : Single-mode Tx1310 / Rx1490 nm</td> </tr> <tr> <td></td> <td></td> <td>S6→For Bi-direction : Single-mode Tx1490 / Rx1310 nm</td> </tr> </table>																	Wavelength	M3→Multi-mode 850 nm	S1→Single-mode 1310 nm	S3→For Bi-direction : Single-mode Tx1310 / Rx1550 nm	M4→Multi-mode 1310 nm	S2→Single-mode 1550 nm	S4→For Bi-direction : Single-mode Tx1550 / Rx1310 nm	00-99 (CWDM Wavelength)		S5→For Bi-direction : Single-mode Tx1310 / Rx1490 nm			S6→For Bi-direction : Single-mode Tx1490 / Rx1310 nm																								
Wavelength	M3→Multi-mode 850 nm	S1→Single-mode 1310 nm	S3→For Bi-direction : Single-mode Tx1310 / Rx1550 nm																																																		
	M4→Multi-mode 1310 nm	S2→Single-mode 1550 nm	S4→For Bi-direction : Single-mode Tx1550 / Rx1310 nm																																																		
	00-99 (CWDM Wavelength)		S5→For Bi-direction : Single-mode Tx1310 / Rx1490 nm																																																		
			S6→For Bi-direction : Single-mode Tx1490 / Rx1310 nm																																																		
<table border="1"> <tr> <td rowspan="2">Bit rate</td> <td>1→155Mbps</td> <td>3→1.0625Gbps</td> <td>5→2.125 Gbps</td> <td>7→2.7 Gbps</td> </tr> <tr> <td>2→622Mbps</td> <td>4→1.25 Gbps</td> <td>6→2.5 Gbps</td> <td>8→3.125 Gbps</td> </tr> </table>																	Bit rate	1→155Mbps	3→1.0625Gbps	5→2.125 Gbps	7→2.7 Gbps	2→622Mbps	4→1.25 Gbps	6→2.5 Gbps	8→3.125 Gbps																												
Bit rate	1→155Mbps	3→1.0625Gbps	5→2.125 Gbps	7→2.7 Gbps																																																	
	2→622Mbps	4→1.25 Gbps	6→2.5 Gbps	8→3.125 Gbps																																																	
<table border="1"> <tr> <td rowspan="6">Electric connector</td> <td>TR→Dual Fiber 1×9 Transceiver</td> <td>PT→Dual Fiber SFP Transceiver</td> <td>EUFB→ EPON ONU SFF 2×5 BIDI Transceiver</td> </tr> <tr> <td>TB→Single Fiber 1×9 Transceiver</td> <td>PB→Single Fiber SFP Transceiver</td> <td>ETFB→ EPON OLT SFF 2×5 BIDI Transceiver</td> </tr> <tr> <td>FT→Dual Fiber SFF Transceiver</td> <td>PM→Dual Fiber SFP Transceiver (DDM)</td> <td>GUFB→ GPON ONU SFF 2×5 BIDI Transceiver</td> </tr> <tr> <td>UB→Dual Bi-Direction SFP Transceiver (OM PIN Assignment)</td> <td></td> <td>GTFB→ GPON OLT SFF 2×5 BIDI Transceiver</td> </tr> <tr> <td>UM→Dual Bi-Direction SFP Transceiver (CSFP MSA)</td> <td></td> <td>GUFM→GPON OLT SFF 2×5 BIDI Transceiver(DDMI)</td> </tr> </table>																	Electric connector	TR→Dual Fiber 1×9 Transceiver	PT→Dual Fiber SFP Transceiver	EUFB→ EPON ONU SFF 2×5 BIDI Transceiver	TB→Single Fiber 1×9 Transceiver	PB→Single Fiber SFP Transceiver	ETFB→ EPON OLT SFF 2×5 BIDI Transceiver	FT→Dual Fiber SFF Transceiver	PM→Dual Fiber SFP Transceiver (DDM)	GUFB→ GPON ONU SFF 2×5 BIDI Transceiver	UB→Dual Bi-Direction SFP Transceiver (OM PIN Assignment)		GTFB→ GPON OLT SFF 2×5 BIDI Transceiver	UM→Dual Bi-Direction SFP Transceiver (CSFP MSA)		GUFM→GPON OLT SFF 2×5 BIDI Transceiver(DDMI)																					
Electric connector	TR→Dual Fiber 1×9 Transceiver	PT→Dual Fiber SFP Transceiver	EUFB→ EPON ONU SFF 2×5 BIDI Transceiver																																																		
	TB→Single Fiber 1×9 Transceiver	PB→Single Fiber SFP Transceiver	ETFB→ EPON OLT SFF 2×5 BIDI Transceiver																																																		
	FT→Dual Fiber SFF Transceiver	PM→Dual Fiber SFP Transceiver (DDM)	GUFB→ GPON ONU SFF 2×5 BIDI Transceiver																																																		
	UB→Dual Bi-Direction SFP Transceiver (OM PIN Assignment)		GTFB→ GPON OLT SFF 2×5 BIDI Transceiver																																																		
	UM→Dual Bi-Direction SFP Transceiver (CSFP MSA)		GUFM→GPON OLT SFF 2×5 BIDI Transceiver(DDMI)																																																		

*Please contact us for the released types.

PT6-M3-4D53Q

Transmitter Electro-Optical Interface (T_C = -10°C~85°C, V_{cc}T, R=3.1V<V_{cc}<3.5V)

Parameter	Symbol	Min.	Typ.	Max.	Unit	Note
Transmitter Differential Input Voltage	TD +/-	400		2000	mVp-p	A
Optical Output Power	P _O	-9		-3	dBm	A
Optical Extinction Ratio	E _R	6			dB	A
Center Wavelength	λ _C	830	850	860	nm	A
Spectral Width (rms)	Δλ			0.85	nm	A
Optical Rise / Fall Time	t _r / t _f			160	ps	A,B
Tx_Fault - High	V _{Fault_H}	2		V_{CC}	V	A
Tx_Fault - Low	V _{Fault_L}	V_{ee}		V_{ee}+0.5	V	A
Tx_Disable - High	V _{Disable_H}	2		V_{CC}	V	A
Tx_Disable - Low	V _{Disable_L}	V_{ee}		V_{ee}+0.8	V	A

Notes:

- A. All of data is measured at 2488Mbps, PRBS 2²³-1, NRZ.
- B. Unfiltered mode

Receiver Electro-Optical Interface (T_C = -10°C~85°C, V_{cc}T, R=3.1V<V_{cc}<3.5V)

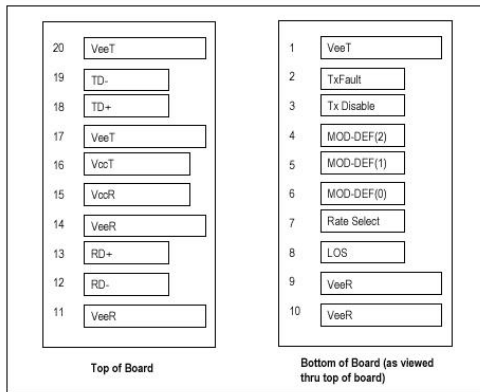
Parameter	Symbol	Min.	Typ.	Max.	Unit	Note
Receiver Differential Output Voltage	RD +/-	600	800		mV _{p-p}	
Receiver Overload	P _{IN} MAX	-3			dBm	A,B
Receiver Sensitivity	P _{IN} MIN			-16	dBm	
Operating Center Wavelength	λ _C	770		860	nm	
Receiver LOS Assert Level	P _{RX_LOS A}	-35			dBm	B
Receiver LOS Deassert Level	P _{RX_LOS D}			-16	dBm	B
Receiver Loss of Signal Hysteresis		0.5	2		dB	B

Notes:

- A. With BER better than or equal to 1×10⁻¹²
- B. measured in the center of the eye opening with 2²³ -1 PRBS, NRZ

PT6-M3-4D53Q

Pin Description



SFP Transceiver Electric Pad Layout

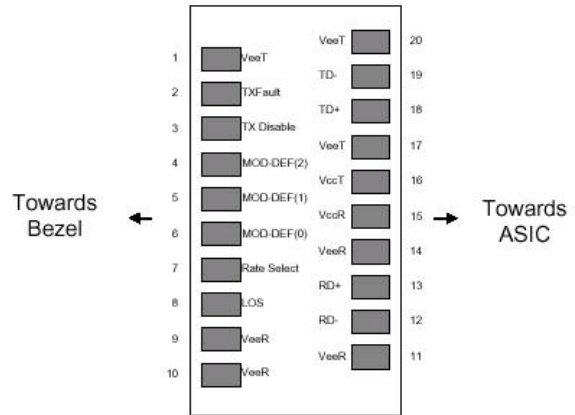


Diagram of Host Board Connector Block Pin Numbers and Names



RoHS Compliant

PT6-M3-4D53Q

www.palconnusa.com

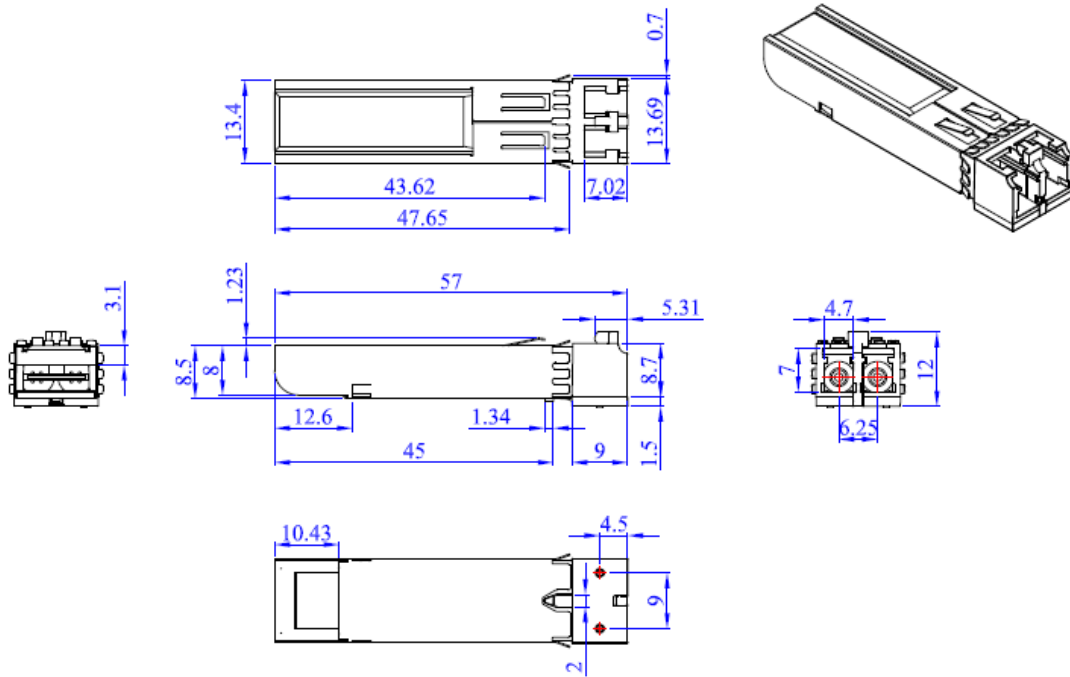
Pin No.	Pin Name	Function	Plug Seq.	Notes
1	V _{ee} T	Transmitter Ground	1	1
2	TX Fault	Transmitter Fault Indication	3	2
3	TX Disable	Transmitter Disable	3	3
4	MOD_DEF 2	Module Definition 2	3	4
5	MOD_DEF 1	Module Definition 1	3	4
6	MOD_DEF 0	Module Definition 0	3	4
7	Rate Select	Select between full or reduced receiver bandwidth	3	5
8	LOS	Loss of Signal	3	6
9	V _{ee} R	Receiver Ground	1	1
10	V _{ee} R	Receiver Ground	1	1
11	V _{ee} R	Receiver Ground	1	1
12	RD -	Inv. Receiver Data Out	3	
13	RD +	Receiver Data Out	3	
14	V _{ee} R	Receiver Ground	1	1
15	V _{cc} R	Receiver Power	2	
16	V _{cc} T	Transmitter Power	2	
17	V _{ee} T	Transmitter Ground	1	1
18	TD +	Transmitter Data In	3	
19	TD -	Inv. Transmitter Data In	3	
20	V _{ee} T	Transmitter Ground	1	1

Note:

- 1, Circuit ground is internally isolated from chassis ground
- 2, Open-Collector outputs, asserted when LD and/or APC function fail.
- 3, Disable when high voltage (>2.0V or Open)
- 4, Should be pulled up with 4.7k – 10kohms on host board to a voltage between 2.0V and 5.5V.
MOD_DEF (0) pulls line low to indicate module is plugged in.
- 5, Low=1.25G/1.0625G, High= 2.125G
- 6, LOS is open collector output. Should be pulled up with 4.7k – 10kohms on host board to a voltage between 2.0V and 5.5V. Logic 0 indicates normal operation; logic 1 indicates loss of signal.

PT6-M3-4D53Q

Mechanical Dimensions (Units in mm)



Application Circuit

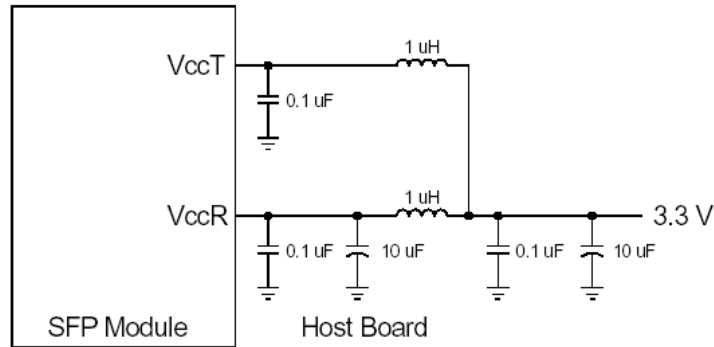


Figure 2A. Recommended Host Board Supply Filtering Network

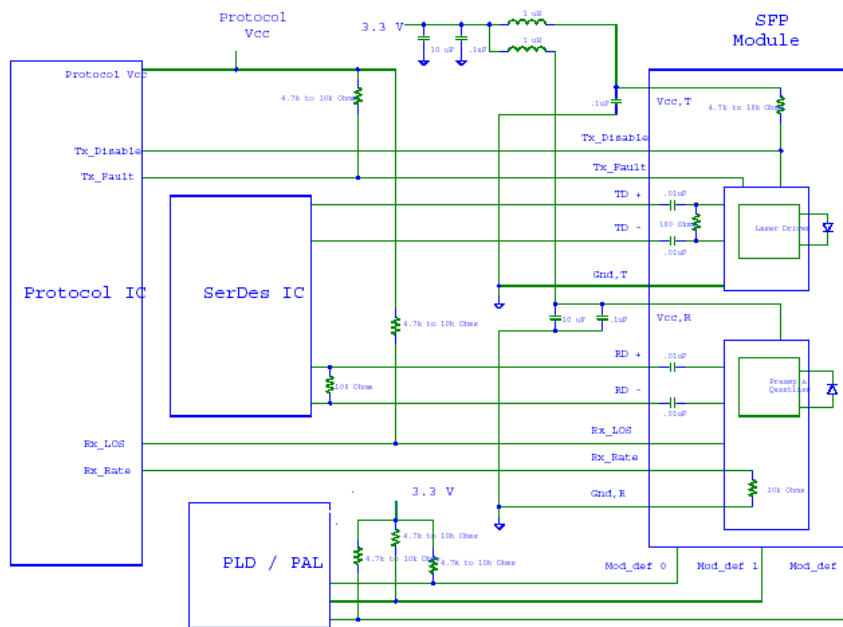


Figure 2B. Example SFP Host Board Schematic