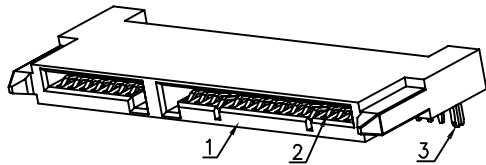
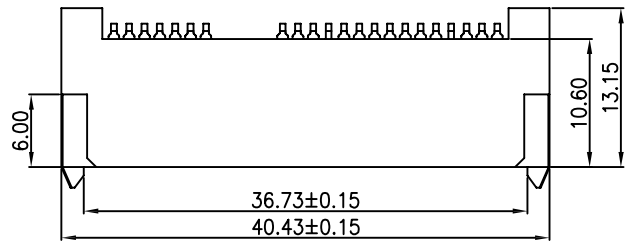
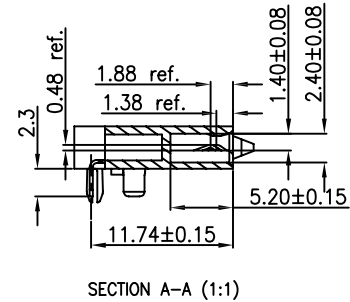
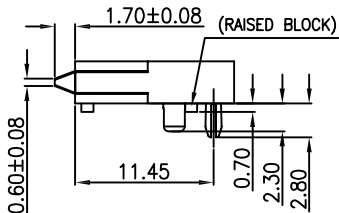
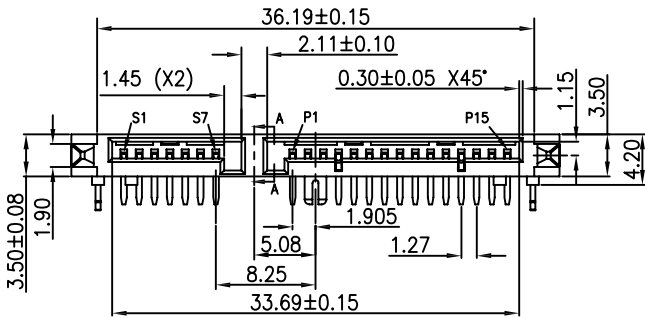


RevNo	Revision note	Date	Signature	Checked
A	NEW RELEASE	02-29-12		



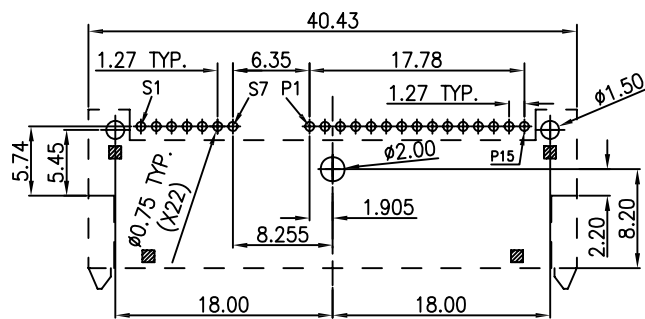
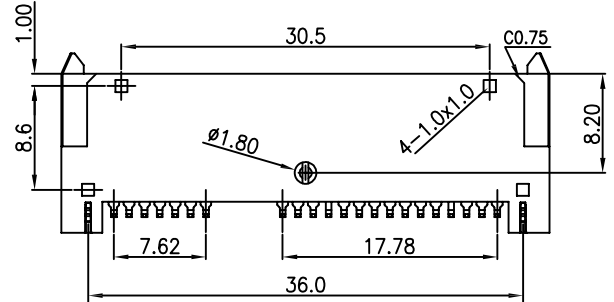
NOTES:

- MATERIAL:
HOUSING MATERIAL: LCP, UL 94V-0
CONTACT MATERIAL: PHOSPHOR BRONZE, T=0.25mm
BOARD LOCK MATERIAL: BRASS, T=0.40mm
- ELECTRICAL PERFORMANCES:
CURRENT RATING: 1.5A MAXIMUM AT PER PIN.
CONTACT RESISTANCE: 30 mΩ MAX. INITIALLY,
& 40 mΩ MAX. AFTER LIFE TESTING.
INSULATION RESISTANCE: 1000 MΩ MIN.
DIELECTRIC WITHSTANDING VOLTAGE: 500V AC AT SEA LEVEL



PART NO. CODE:
SAT007 - N K X - X X
① ② ③ ④ ⑤ ⑥

- ① SERIES:
SAT007: SATA CONN, 7+15P
R/A, THRU-HOLE TYPE
- ② POSITIONS:
N: 22 POSITIONS
- ③ INSULATOR COLOR:
K: BLACK
W: WHITE
- ④ CONTACT PLATING:
1: Au 1u"
2: Au 3~5u"
4: Au 15u"
5: Au 30u"
- ⑤ ENVIRONMENT:
O: RoHS
H: HALOGEN FREE
- ⑥ WAY OF PACKING:
T: TRAY
R: TAPE & REEL
B: WATERPROOF BAG



P.C.B. LAYOUT (TOP VIEW)

BILL OF MATERIAL :

4	CLASP	2	BRASS	PLATING NICKEL
3	15P CONTACT	15	PHOSPHOR BRONZE	PLATING GOLD
2	7P CONTACT	7	PHOSPHOR BRONZE	PLATING GOLD
1	HOUSING	1	LCP	N/A
ITEM	PART NAME	Q'TY	MATERIAL	PLATING

GENERAL TOLERANCES
(UNLESS SPECIFIED)
DIMENSION STYLE : MM < INCH >

	MM	ANGLE°
4 PLACES	± 0.15	± 0.5°
3 PLACES	± 0.05	± 0.5°
2 PLACES	± 0.13	± 0.5°
1 PLACES	± 0.25	± 1.0°
0 PLACES	± 0.38	± 2.0°

THIRD ANGLE PROJECTION

FINISH	SEE NOTES
MATERIAL	SEE NOTES
DRAWN BY	DATE
R. Ly	02-29-12
CHECKED BY	DATE
A. TENG	02-29-12
APPROVED BY	DATE
---	---



TITLE SATA CONNECTOR, 7+15PIN, RIGHT ANGLE, THROUGH HOLE TYPE			
SIZE	A4	DRAWING NO.	SAT007-NKX-XX
SCALE	NONE	SHEET	1 OF 1
		REV.	A