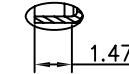
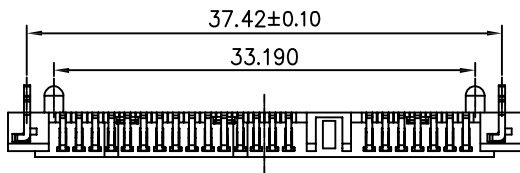
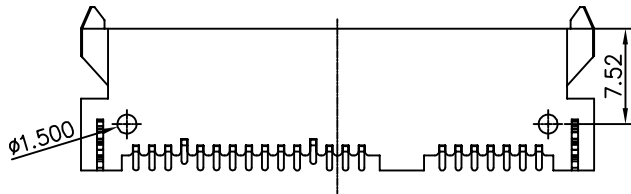
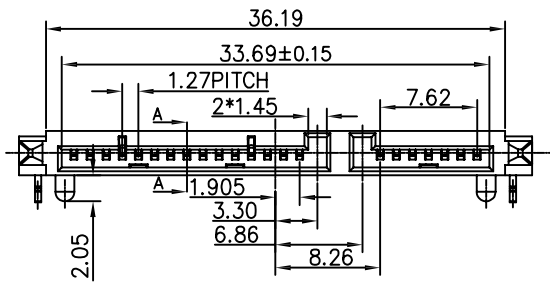
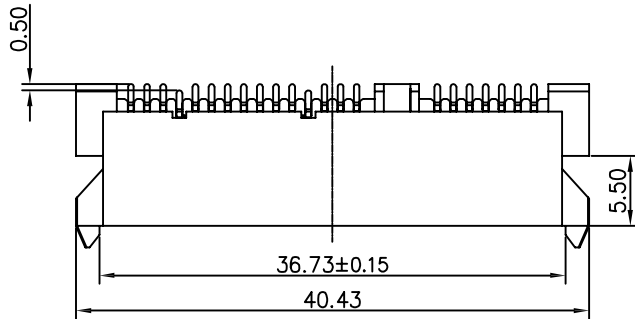
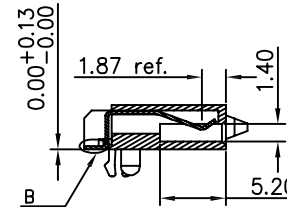
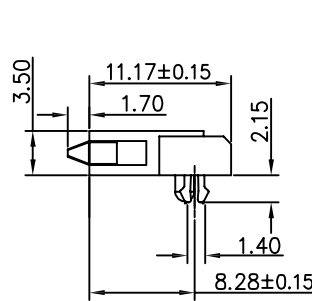


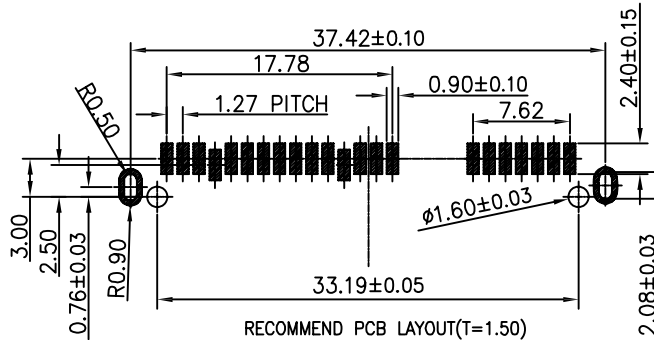
RevNo	Revision note	Date	Signature	Checked
A	NEW RELEASE	02-29-12		



DETAIL B SCALE 2:1



SECTION A-A (1:1)



RECOMMEND PCB LAYOUT(T=1.50)
PCB TOLERANCE±0.05

NOTES:

- MATERIAL:
HOUSING MATERIAL: THERMOPLASTIC, UL 94V-0
CONTACT MATERIAL: PHOSPHOR BRONZE, T=0.25mm
BOARD LOCK MATERIAL: BRASS, T=0.45mm
- ELECTRICAL PERFORMANCES:
CURRENT RATING: 1.5A MAXIMUM AT PER PIN.
CONTACT RESISTANCE: 30 mΩ MAX. INITIALLY,
& 40 mΩ MAX. AFTER LIFE TESTING.
INSULATION RESISTANCE: 1000 MΩ MIN.
DIELECTRIC WITHSTANDING VOLTAGE: 500V AC AT SEA LEVEL

PART NO. CODE:

SAT011 - N X X - X X
① ② ③ ④ ⑤ ⑥

- SERIES:
SAT011: SATA II CONN, RIGHT ANGLE, SMT TYPE
- POSITIONS:
N: 22 POSITIONS
- INSULATOR COLOR:
K: BLACK
W: WHITE
- CONTACT PLATING:
1: Au 1u"
2: Au 3~5u"
4: Au 15u"
5: Au 30u"
- ENVIRONMENT:
O: RoHS
H: HALOGEN FREE
- WAY OF PACKING:
T: TRAY
R: TAPE & REEL
B: WATERPROOF BAG

BILL OF MATERIAL :

ITEM	PART NAME	Q'TY	MATERIAL	PLATING
4	CLASP	2	BRASS	PLATING NICKEL
3	15P CONTACT	15	PHOSPHOR BRONZE	AU OVER Ni
2	7P CONTACT	7	PHOSPHOR BRONZE	AU OVER Ni
1	HOUSING	1	THERMOPLASTIC	N/A

GENERAL TOLERANCES
(UNLESS SPECIFIED)
DIMENSION STYLE : MM < INCH >

	MM	ANGLE°
4 PLACES	± ---	± ---
3 PLACES	± 0.05	± ---
2 PLACES	± 0.13	± 0.5°
1 PLACES	± 0.25	± 1.0°
0 PLACES	± 0.38	± 2.0°



THIRD ANGLE PROJECTION

FINISH	
SEE NOTES	
MATERIAL	
SEE NOTES	
DRAWN BY	DATE
R. Ly	02-29-12
CHECKED BY	DATE
A. TENG	02-29-12
APPROVED BY	DATE
---	---



TITLE			
SATA CONNECTOR, 7+15PIN, FEMALE, RIGHT ANGLE, SMT TYPE			
SIZE	DRAWING NO.	REV.	
A4	SAT011-NXX-XX	1	A
SCALE	SHEET	OF	REV.
NONE	1	1	A