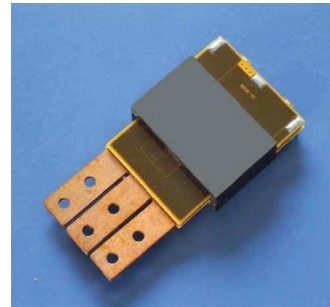


PLANAR TRANSFORMERS

PEE58-2 3000W SERIES

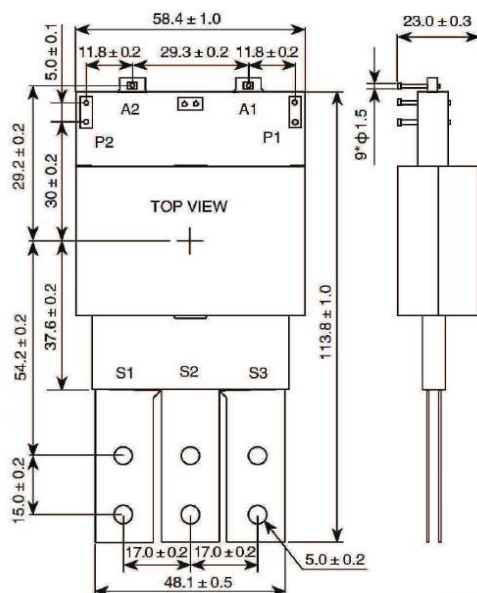
- Use EE58 planar magnetic core, multilayer PCB technique
- Use for AC/DC module power, max output power 3000W
- Working frequency: 50K - 150K
- Outline dimension: 113.8 x 58.5 x 23 mm
- Withstand voltage between secondary coils: 2.5KVDC
- Working temperature range: -40°C - +85°C
- Weight: ≤260g



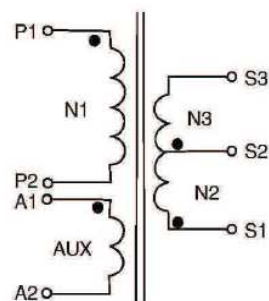
Electrical Specifications @ 25°C

Part Number	Turn Ratio	Primary winding N1(P1-P2)			SEC. (N2+N3)
		Inductance μH (min)	Leakage μH (max)	DC Resistance mΩ (max)	DC Resistance mΩ (max)
	N1:(N2+N3):AUX				
PEE58T414011	14:(1+1):1	1800	1.8	26	0.01+0.01

Dimensions (unit: mm)



Schematic



PRODUCT P/N: PEE58T414011

Rev 01 1/10/17

SOUTHERN CALIFORNIA OFFICE:

15991 Red Hill Avenue, Suite #102,
Tustin, California 92780 USA

Tel:+1-714-460-0718 Fax:+1-714-460-0728

<http://www.palnova.com>

NORTHERN CALIFORNIA OFFICE:

500 Yosemite Drive
Milpitas, CA. 95035 USA

Tel:+1-408-855-8866 Fax:+1-408-855-8868