

RevNo	Revision note	Date	Signature	Checked
A	NEW RELEASE	01-13-12		

NOTES:

1. MATERIAL:

HOUSING: LCP, UL 94V-0  
 OUTER SHELL: BRASS, T=0.50mm  
 TERMINAL: PHOSPHOR BRONZE, T=0.20mm

2. CONTACT PLATING:

NICKEL UNDERPLATING OVER ALL  
 GOLD PLATING AT CONTACT AREA  
 TIN PLATING AT SOLDERING AREA

3. SHELL PLATING: Ni 50u" MIN

4. PACKAGING SPECIFICATION: TRAY

5. TERMINAL SOLDER-TAIL COPLANARITY 0.10mm MAX

6. ELECTRICAL:

CURRENT RATING: 0.5A  
 VOLTAGE RATING: 40V AC(rms)  
 DIELECTRIC WITHSTANDING VOLTAGE: 500V AC FOR 1 MINUTE  
 CONTACT RESISTANCE: 30 mΩ MAX.  
 INSULATION RESISTANCE: 100 MΩ MIN.  
 OPERATING TEMPERATURE: -25°C TO +85°C

PART NO. CODE:

HDM001 - K K X - X X  
 ① ② ③ ④ ⑤ ⑥

① SERIES:

HDM001: HDMI CONNECTOR SMT TYPE

② POSITIONS:

K: 19 POSITIONS

③ INSULATOR COLOR:

K: BLACK  
 W: WHITE

④ CONTACT PLATING:

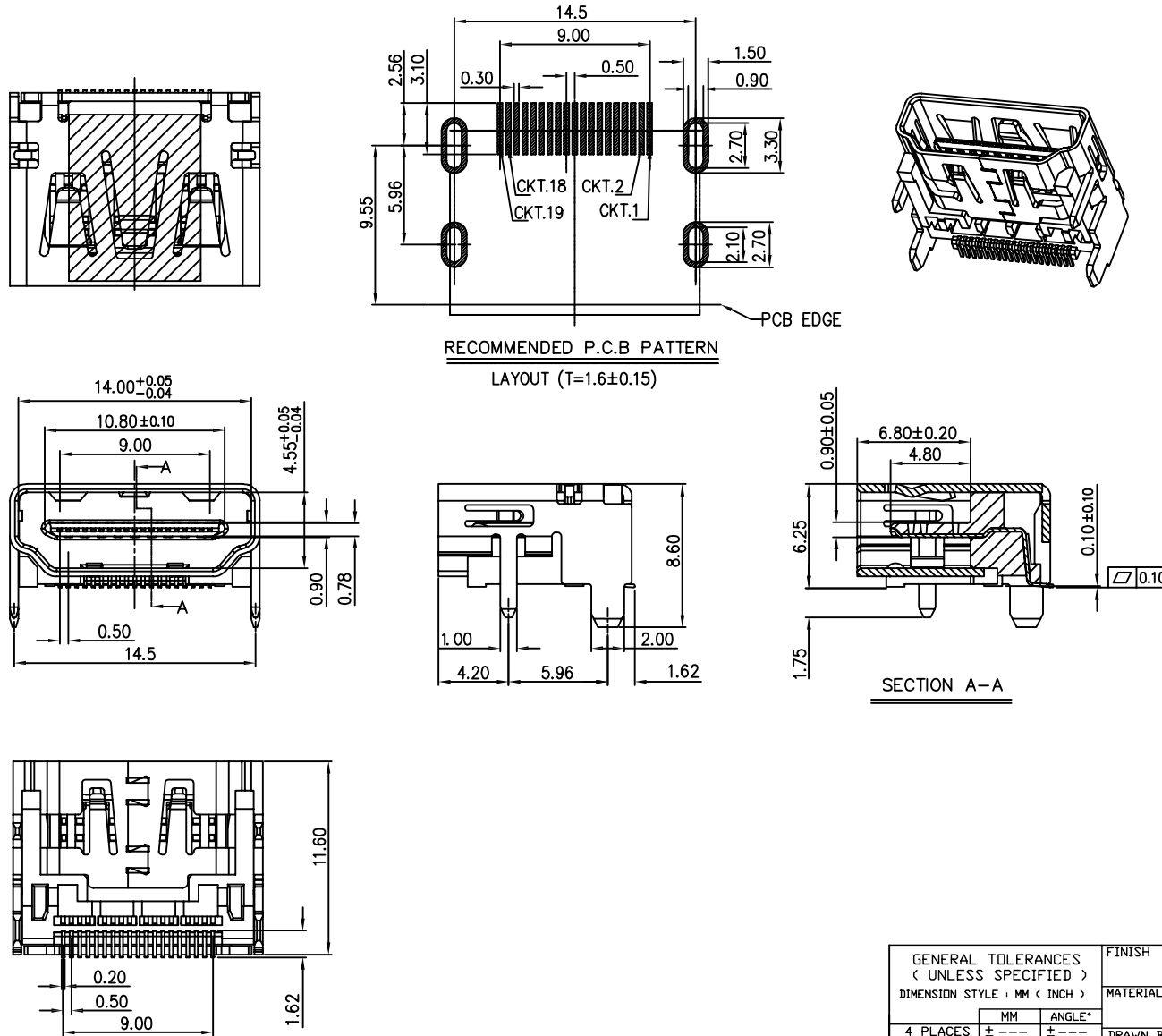
1: Au 1u"  
 2: Au 3~5u"  
 4: Au 15u"  
 5: Au 30u"

⑤ ENVIRONMENT:

O: RoHS  
 H: HALOGEN FREE

⑥ WAY OF PACKING:

T: TRAY  
 R: TAPE & REEL  
 B: WATERPROOF BAG



ITEM	PART NAME	Q'TY/EA	MATERIAL	PLATING
3	OUTER SHELL	1	BRASS	NICKEL
2	TERMINAL	19	PHOSPHOR BRONZE	Au OVER Ni
1	HOUSING	1	THERMOPLASTIC	N/A

GENERAL TOLERANCES ( UNLESS SPECIFIED ) DIMENSION STYLE : MM < INCH >	
	ANGLE°
4 PLACES	± ---
3 PLACES	± 0.05
2 PLACES	± 0.13
1 PLACES	± 0.25
0 PLACES	± 0.38

FINISH	SEE NOTES
MATERIAL	SEE NOTES
DRAWN BY	DATE
R. Ly	01-13-12
CHECKED BY	DATE
A. TENG	01-13-12
APPROVED BY	DATE
---	---

**PALCONN**

TITLE  
HDMI CONNECTOR, 19P, R/A, SMT TYPE

SIZE A4 DRAWING NO. HDM001-KKX-XX

SCALE NONE SHEET 1 OF 1 REV. A