

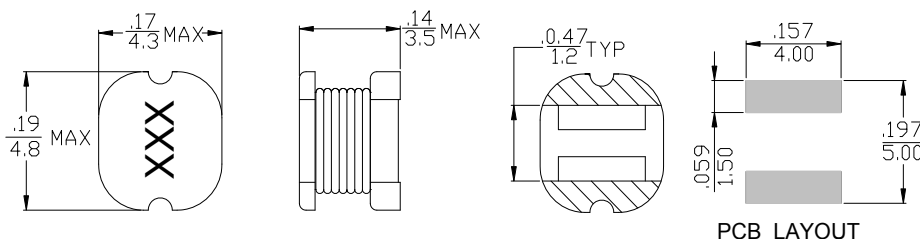
- Large Current and Low DCR
- DC/DC-converter
- Current capability up to 2.56A
- Recommended solder profile:Reflow
- ROHS Compliance Product
- Operating Temperature range: -40°C TO +85°C



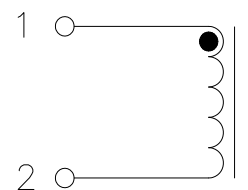
Electrical Specifications @ 25°C

P/N	OCL@100kHz 0.1V (μH)	D.C.R (mΩ MAX)	RTED CURRENT (A MAX)
PDI43-1R0M	1.0±20%	48.7	2.56
PDI43-1R4M	1.4±20%	56.2	2.52
PDI43-1R8M	1.83±20%	63.7	1.96
PDI43-2R2M	2.2±20%	71.2	1.75
PDI43-2R7M	2.7±20%	78.7	1.58
PDI43-3R3M	3.3±20%	86.2	1.44
PDI43-3R9M	3.9±20%	93.7	1.33
PDI43-4R7M	4.7±20%	109	1.15
PDI43-5R6M	5.6±20%	126	0.99
PDI43-6R6M	6.8±20%	132	0.95
PDI43-8R2M	8.2±20%	146	0.84
PDI43-100M	10±20%	182	1.04
PDI43-120M	12±20%	210	0.97
PDI43-150M	15±20%	235	0.85
PDI43-180M	18±20%	338	0.74
PDI43-220M	22±20%	378	0.68
PDI43-270M	27±20%	522	0.62
PDI43-330K	33±10%	540	0.56
PDI43-390K	39±10%	587	0.52
PDI43-470K	47±10%	844	0.44
PDI43-560K	56±10%	937	0.42
PDI43-680K	68±10%	1117	0.37

Dimensions (unit: inch/mm)



Schematics



TUSTIN OFFICE:

15991 Red Hill Avenue, Suite #102, Tustin,
California 92780 USA

Tel:+1-714-460-0718 Fax:+1-714-460-0728

<http://www.palnova.com>

SANTA CLARA OFFICE:

3000 Kenneth Street, Santa Clara,
California 95054 USA

Tel:+1-408-855-8866 Fax:+1-408-855-8868