

SMD Inductors For Power Line (Wound, Magnetic Epoxy Shielded)

PPC Series PPC40□□FT Type

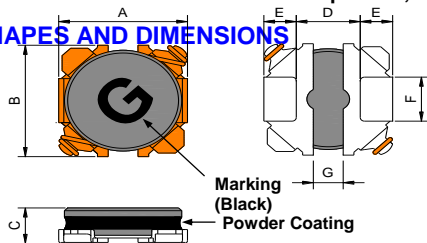
FEATURES

- Miniature size : Mount area 4.2x 4.1mm ; Low profile 1.0~1.8mm max. height
- Generic use for portable DC to DC converter line.
- Available for automatic mounting in tape and reel package.
- The products contain no lead and also support lead-free soldering.
- It is a product conforming to RoHS directive.
- High Reliability for Resistance to Soldering heat.

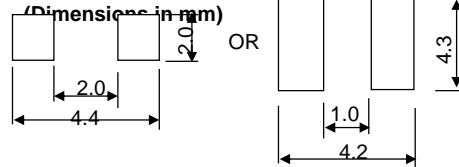
APPLICATIONS

Power source inductor for mobile phones, HDDs, LCD Panel, and DSCs

SHAPES AND DIMENSIONS



RECOMMENDED PC BOARD PATTERN



unit: mm

Type	A(±0.2)	B(±0.2)	C(Max.)	D(±0.2)	E(±0.1)	F(±0.15)	G(±0.15)	Reel	Qty
PPC4010FT	4.0	3.9	1.0	2.1	0.96	1.6	1.1	13"	3,000
PPC4012FT	4.0	3.9	1.2	2.1	0.96	1.6	1.1	13"	3,000
PPC4015FT	4.0	3.9	1.5	2.1	0.96	1.6	1.1	13"	3,000
PPC4018FT	4.0	3.9	1.8	2.1	0.96	1.6	1.1	13"	3,000

ELECTRICAL CHARACTERISTICS

PT/NO. (PPC40□□FT)	L(μH)	Resistance RDC(Ω)±20%												Marking
		Rated DC Current												
		IDC1(A)				IDC2(A)								
		4010	4012	4015	4018	4010	4012	4015	4018	4010	4012	4015	4018	
R56NZF	0.56				41m				5.50				1.95	7
1R0NZF	1.0	56m	42m	48m	50m	1.40	2.30	3.60	4.70	1.70	1.90	1.85	1.85	A
1R2NZF	1.2				60m				4.20				1.70	B
1R5NZF	1.5	72m	57m	57m	60m	1.20	1.90	2.90	3.70	1.60	1.70	1.70	1.70	C
1R8NZF	1.8				65m				3.40				1.65	D
2R2NZF	2.2	84m	86m	66m	74m	1.10	1.50	2.50	3.20	1.55	1.55	1.60	1.60	E
2R7NZF	2.7				92m				2.90				1.50	F
3R3NZF	3.3	0.11	0.10	94m	97m	0.90	1.30	2.20	2.70	1.35	1.40	1.45	1.45	G
3R9NZF	3.9				0.11				2.40				1.36	H
4R7MZF	4.7	0.16	0.13	0.12	0.12	0.80	1.10	1.90	2.20	1.15	1.25	1.30	1.30	I
5R6MZF	5.6			0.14	0.16			1.60	2.00			1.20	1.20	J
6R8MZF	6.8	0.23	0.18	0.17	0.17	0.65	0.95	1.40	1.80	0.90	1.05	1.10	1.15	K
8R2MZF	8.2			0.21				1.20				1.00		L
100MZF	10	0.31	0.28	0.23	0.24	0.50	0.75	1.10	1.50	0.75	0.80	0.95	1.00	M
150MZF	15	0.41	0.39	0.35	0.35	0.45	0.65	0.90	1.20	0.65	0.70	0.75	0.83	O
220MZF	22	0.66	0.53	0.49	0.49	0.40	0.55	0.80	1.00	0.50	0.60	0.63	0.63	Q
330MZF	33	0.96	0.85	0.71	0.72	0.30	0.45	0.60	0.82	0.38	0.40	0.58	0.53	S
470MZF	47	1.23	1.14	1.08	1.17	0.25	0.38	0.55	0.75	0.33	0.35	0.50	0.49	U
680MZF	68			1.65				0.40				0.45		W
820MZF	82			1.88				0.35				0.30		X
101MZF	100			2.46	2.17			0.33	0.45			0.38	0.28	Y

Remark :

- Tolerance of inductance: M(±20%), N(±30%)
- IDC1 : Based on inductance change ($\Delta L/L_0 : \leq -30\%$) @ ambient temp. 25°C
IDC2 : Based on temperature rise ($\Delta T : 40^\circ\text{C TYP.}$)
Rated DC Current : The less value which is IDC1 or IDC2.

• All specifications are subject to change without notice.

TUSTIN OFFICE:

15991 Red Hill Avenue, Suite #102,
Tustin, California 92780 USA
Tel:+1-714-460-0718 Fax:+1-714-460-0728
<http://www.palnova.com>

MILPITAS OFFICE:

500 Yosemite Drive,
Milpitas, CA. 95035 USA
Tel:+1-408-855-8866 Fax:+1-408-855-8868