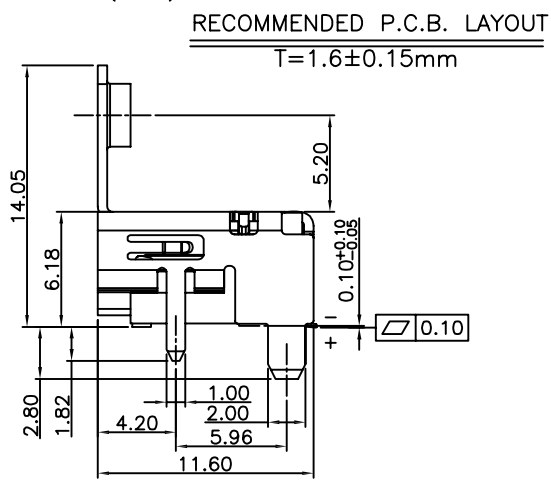
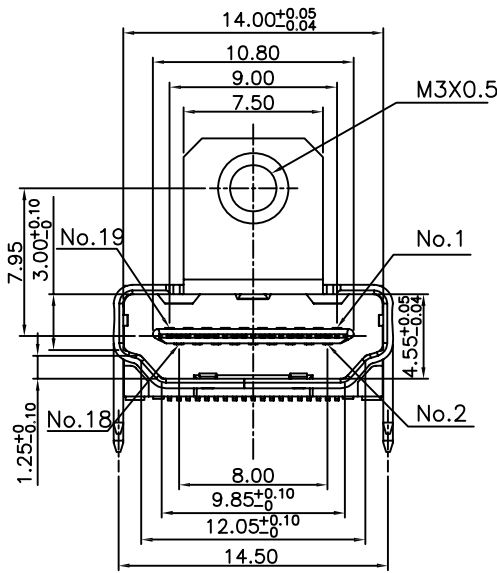
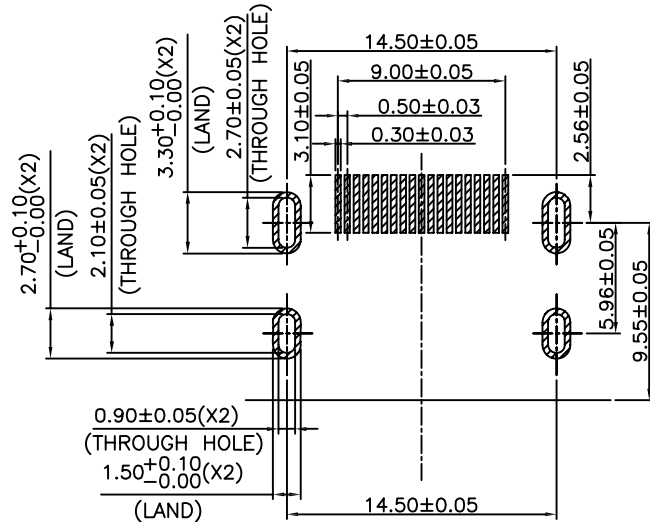
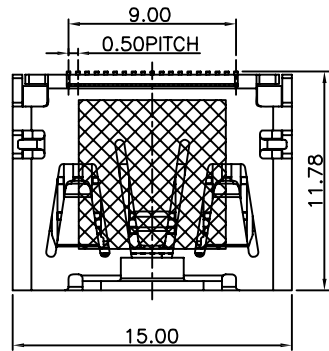


RevNo	Revision note	Date	Signature	Checked
A	NEW RELEASE	01-13-12		



RECOMMENDED P.C.B. LAYOUT  
T=1.6±0.15mm

NOTES:

- MATERIAL:  
HOUSING: LCP 30% GLASS FILLED, UL 94V-0  
OUTER SHELL: CARBON STEEL, T=0.50mm  
TERMINAL: PHOSPHOR BRONZE, T=0.20mm
- CONTACT PLATING:  
NICKEL UNDERPLATING OVER ALL  
GOLD PLATING AT CONTACT AREA  
TIN PLATING AT SOLDERING AREA
- SHELL PLATING: NICKEL 50u" MIN
- PACKAGING SPECIFICATION: TRAY
- TERMINAL SOLDER-TAIL COPLANARITY 0.10mm MAX
- ELECTRICAL:  
INSULATION RESISTANCE: 100 Mohm MIN  
CONTACT RESISTANCE: 30 mohm MAX  
DIELECTRIC WITHSTANDING VOLTAGE: 500 VAC FOR 1 MINUTE  
CURRENT RATING: 0.5A  
VOLTAGE RATING: 40V AC(rms)

PART NO. CODE:


HDM004 - K K X - X X  
① ②③④ ⑤⑥

- SERIES:  
HDM004: HDMI CONNECTOR, FEMALE, 19PIN  
SMT TYPE WITH FLANGE
- POSITIONS:  
K: 19 POSITIONS
- INSULATOR COLOR:  
K: BLACK  
W: WHITE  
C: CREAM
- CONTACT PLATING:  
1: Au 1u"  
2: Au 3~5u"  
4: Au 15u"  
5: Au 30u"
- ENVIRONMENT:  
O: RoHS  
H: HALOGEN FREE
- WAY OF PACKING:  
T: TRAY  
R: TAPE & REEL  
B: WATERPROOF BAG

ITEM	PART NAME	Q'TY/EA	MATERIAL	PLATING
3	OUTER SHELL	1	CARBON STEEL	NICKEL
2	TERMINAL	19	PHOSPHOR BRONZE	Au OVER Ni
1	HOUSING	1	LCP	N/A

GENERAL TOLERANCES ( UNLESS SPECIFIED ) DIMENSION STYLE : MM < INCH >		
	MM	ANGLE°
4 PLACES	± 0.05	± 0.5°
3 PLACES	± 0.05	± 0.5°
2 PLACES	± 0.13	± 1.0°
1 PLACES	± 0.25	± 2.0°
0 PLACES	± 0.38	± 2.0°

FINISH	SEE NOTES
MATERIAL	SEE NOTES
DRAWN BY	DATE
R. Ly	01-13-12
CHECKED BY	DATE
A. TENG	01-13-12
APPROVED BY	DATE
---	---



TITLE		HDMI CONNECTOR, FEMALE, 19P, R/A, SMT TYPE WITH FLANGE	
SIZE	A4	DRAWING NO.	HDM004-KKX-XX
SCALE	NONE	SHEET	1 OF 1
		REV.	A

