

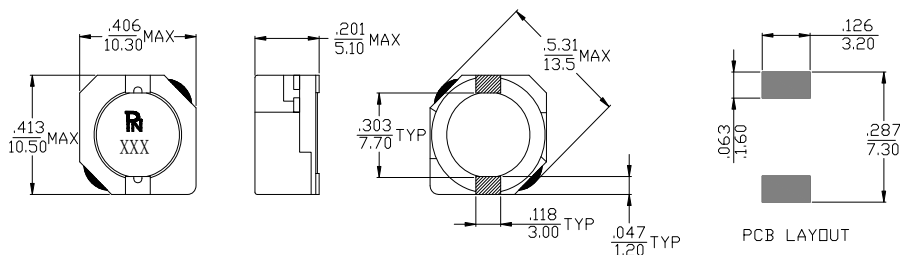
- Large Current and Low DCR
- Magnetically shielded construction
- Current capability up to 7.5A
- Recommended solder profile:Reflow
- ROHS Compliance Product
- Operating Temperature range: -40°C TO +85°C



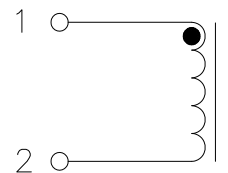
Electrical Specifications @ 25°C

P/N	OCL@100KHz 0.1V ($\mu\text{H}\pm 30\%$)	D.C.R (m Ω MAX)	RATED CURRENT (A MAX)
PDRH105R-0R8N	0.8	4.3	7.50
PDRH105R-1R5N	1.5	5.8	7.00
PDRH105R-2R2N	2.2	7.2	6.30
PDRH105R-3R3N	3.3	10.4	5.75
PDRH105R-4R7N	4.7	12.3	4.75
PDRH105R-6R8N	6.8	18	4.10
PDRH105R-8R2N	8.2	20	4.00
PDRH105R-100N	10	26	3.75
PDRH105R-150N	15	41	2.65
PDRH105R-220N	22	61	1.80
PDRH105R-330N	33	84	1.65
PDRH105R-470N	47	130	1.50
PDRH105R-560N	56	149	1.45
PDRH105R-680N	68	201	1.20
PDRH105R-820N	82	227	0.95
PDRH105R-101N	100	253	0.90
PDRH105R-151N	150	370	0.80
PDRH105R-221N	220	500	0.70
PDRH105R-331N	330	812	0.50

Dimensions (unit: inch/mm)



Schematics



TUSTIN OFFICE:

15991 Red Hill Avenue, Suite #102, Tustin,
California 92780 USA

Tel:+1-714-460-0718 Fax:+1-714-460-0728

<http://www.palnova.com>

SANTA CLARA OFFICE:

3000 Kenneth Street, Santa Clara,
California 95054 USA

Tel:+1-408-855-8866 Fax:+1-408-855-8868