

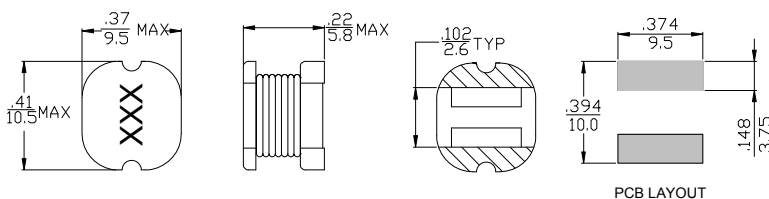
- Large Current and Low DCR
- DC/DC-converter
- Current capability up to 2.6A
- Recommended solder profile:Reflow
- ROHS Compliance Product
- Operating Temperature range: -40°C TO +85°C



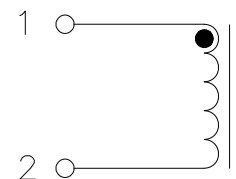
### Electrical Specifications @ 25°C

P/N	OCL@1KHz 0.1V	D.C.R (mΩ MAX)	RTED CURRENT (A MAX)
PDI105-100M	10μH±20%	60	2.60
PDI105-120M	12μH±20%	70	2.45
PDI105-150M	15μH±20%	80	2.27
PDI105-180M	18μH±20%	90	2.15
PDI105-220M	22μH±20%	100	1.95
PDI105-270M	27μH±20%	110	1.76
PDI105-330M	33μH±20%	120	1.50
PDI105-390M	39μH±20%	140	1.37
PDI105-470K	47μH±10%	170	1.28
PDI105-560K	56μH±10%	190	1.17
PDI105-680K	68μH±10%	220	1.11
PDI105-820K	82μH±10%	250	1.00
PDI105-101K	100μH±10%	350	0.97
PDI105-121K	120μH±10%	400	0.89
PDI105-151K	150μH±10%	470	0.78
PDI105-181K	180μH±10%	630	0.72
PDI105-221K	220μH±10%	730	0.66
PDI105-271K	270μH±10%	970	0.57
PDI105-331K	330μH±10%	1150	0.52
PDI105-391K	390μH±10%	1300	0.48
PDI105-471K	470μH±10%	1480	0.42
PDI105-561K	560μH±10%	1900	0.33
PDI105-681K	680μH±10%	2250	0.28
PDI105-821K	820μH±10%	2550	0.24

### Dimensions (unit: inch/mm)



### Schematics



### TUSTIN OFFICE:

15991 Red Hill Avenue, Suite #102, Tustin,  
California 92780 USA

Tel:+1-714-460-0718 Fax:+1-714-460-0728

<http://www.palnova.com>

### SANTA CLARA OFFICE:

3000 Kenneth Street, Santa Clara,  
California 95054 USA

Tel:+1-408-855-8866 Fax:+1-408-855-8868