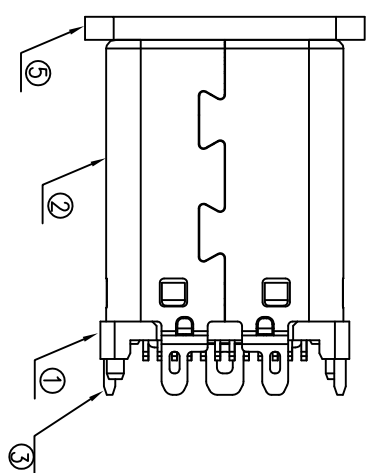
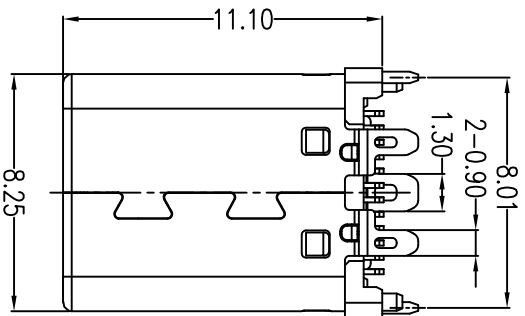




RoHS Compliant
2013/95/EC

REV.	ECN NO.	DESCRIPTION	DATE	DRAWING
A0		New Issue	2016-11-11	Jason, W



- NOTES:
- SPECIFICATION:
- CURRENT RATING: 3.0A /5.0A MAX(SEE TABLE I)
 - VOLTAGE: 100 VAC
 - TEMPERATURE RANGE: -30 °C ~ 85 °C
 - CONTACT RESISTANCE: 40 MILLIONHM MAX
 - INSULATION RESISTANCE: 100 MEGOHMS MIN.
 - INSERTION FORCE : 5N~20N
 - UNMATING FORCE: 8N~20N
 - DURABILITY: 10,000 CYCLES

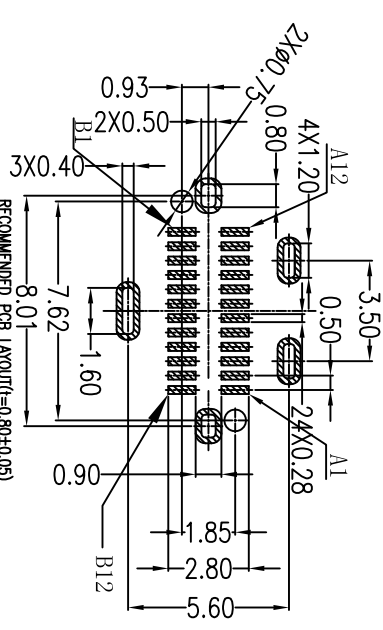
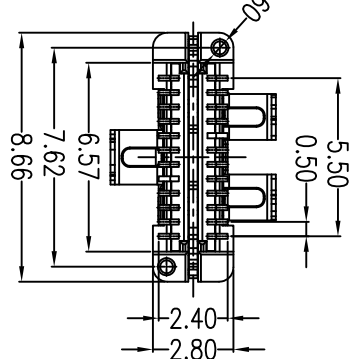
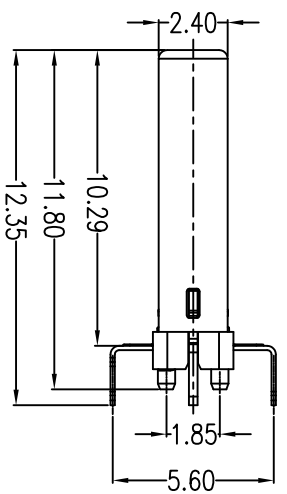
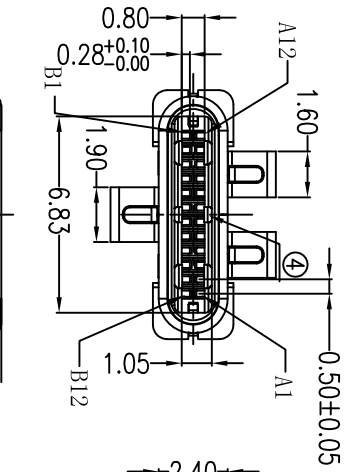
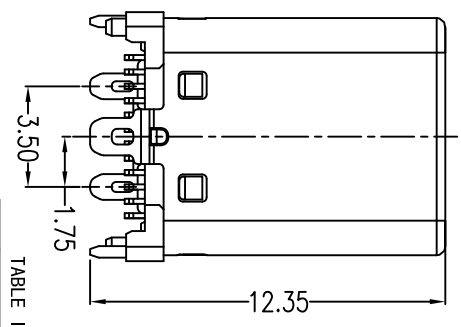


TABLE III

COMPONENT SIDE(GENERAL TOLERANCE:±0.05)

NO.	DESCRIPTION	MATERIAL	REMARKS	QTY
5	COVER	HIGH TEMPERATURE PLASTIC	LCP BLACK	1PCS
4	SPRING	STAINLESS STEEL	---	2PCS
3	LATCH	STAINLESS STEEL	---	1PCS
2	SHELL	STAINLESS STEEL	IN: 80~1200 ^u m/Min/NI bose: 500 ^u m/Min	1PCS
1	TERMINAL HOUSING	HIGH TEMPERATURE PLASTIC	LCP BLACK/ CONTACT: Au: 30 ^u /300 ^u m	2PCS

TABLE I (note 1)



NO.	PART NO.	CURRENT RATING	PLATING GOLD U ^o
2	UCM24DB6T1-T63	5A	30U ^o
1	UCM24DB2T1-T63	3A	30U ^o

A1	A2	A3	A4	A5	A6	A7	A8	A9	A10	A11	A12	B1	B2	B3	B4	B5	B6	B7	B8	B9	B10	B11	B12	
GND	SSTXP1	SSTXN1	VBUS	CC1	DP1	DN1	SBU1	VBUS	SSRXN2	SSRXP2	GND	GND	SSRXP2	SSTXP2	SSTXN2	VBUS	CC2	DP2	DN2	SBU2	SSRXN1	SSRXP1	GND	
PIN	PIN	PIN	PIN	PIN	PIN	PIN	PIN	PIN	PIN	PIN	PIN	PIN	PIN	PIN	PIN	PIN	PIN	PIN	PIN	PIN	PIN	PIN	PIN	PIN
SIGNAL NAME	SIGNAL NAME	SIGNAL NAME	SIGNAL NAME	SIGNAL NAME	SIGNAL NAME	SIGNAL NAME	SIGNAL NAME	SIGNAL NAME	SIGNAL NAME	SIGNAL NAME	SIGNAL NAME	SIGNAL NAME	SIGNAL NAME	SIGNAL NAME	SIGNAL NAME	SIGNAL NAME	SIGNAL NAME	SIGNAL NAME	SIGNAL NAME	SIGNAL NAME	SIGNAL NAME	SIGNAL NAME	SIGNAL NAME	SIGNAL NAME

PALCONN

TITLE: USB OM TYPE VERTICAL SMT 3FOOTS DIP CONN

PART NO.:	APV:	DATE:	UNIT:
UCM24DBX1T-163	Bin. H	2016. 11. 11	mm
P-MB-CF021	Jason, W	2016. 11. 11	UNLESS SPECIFIED,
C-UC012	Jason, W	2016. 11. 11	TOLERANCE:
	Jason, W	2016. 11. 11	X. ±0.40
			X.x ±0.30
			X.xxx ±0.20
			X.xxx ±0.05
			ANGLES ±1°