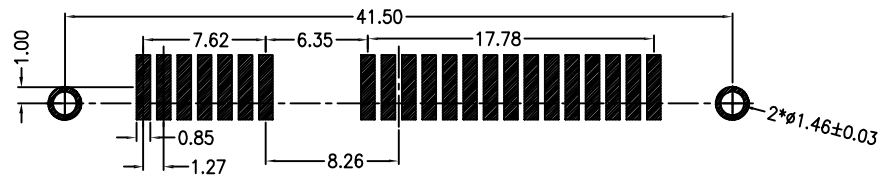
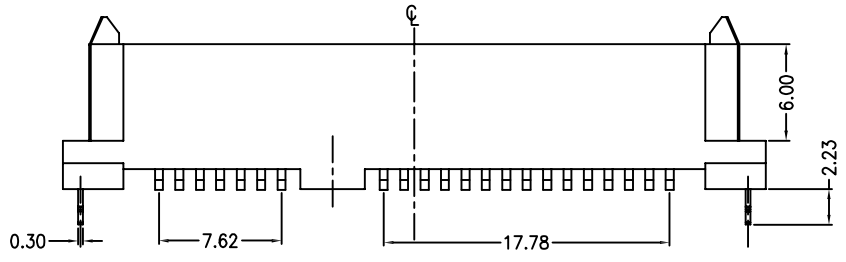
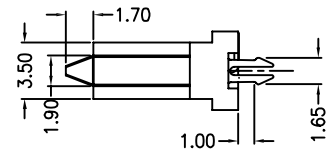
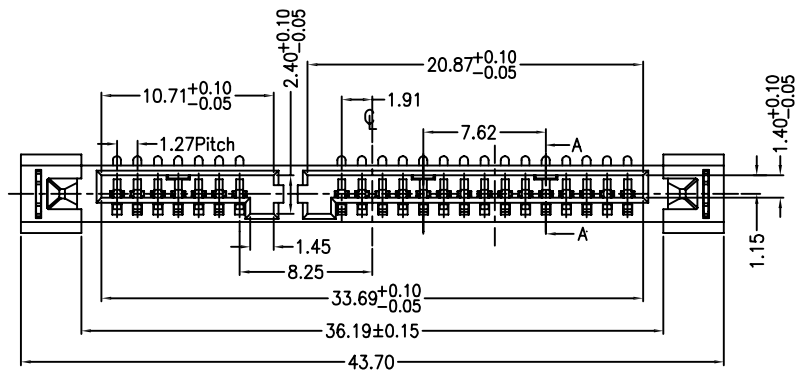
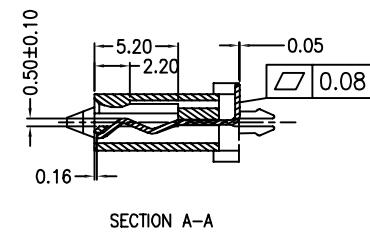
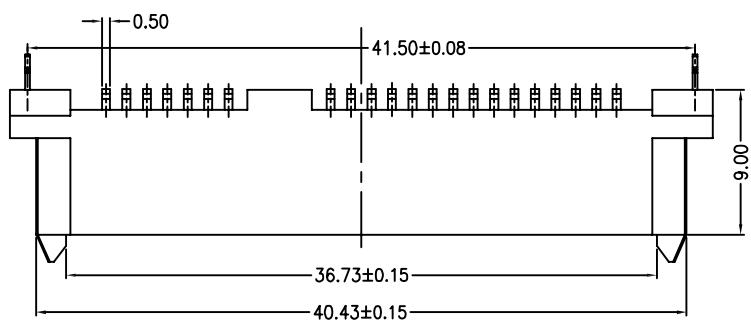


RevNo	Revision note	Date	Signature	Checked
A	NEW RELEASE	06-01-12		

- NOTES:
- MATERIAL:
HOUSING: THERMOPLASTIC, UL 94V-0
CONTACT: PHOSPHOR BRONZE, T=0.25mm
BOARD LOCK: BRASS, T=0.45mm
 - ELECTRICAL PERFORMANCES:
CURRENT RATING: 1.5A MAXIMUM AT PER PIN.
CONTACT RESISTANCE: 30 mΩ MAX. INITIALLY,
& 40 mΩ MAX. AFTER LIFE TESTING.
INSULATION RESISTANCE: 1000 MΩ MIN.
DIELECTRIC WITHSTANDING VOLTAGE: 500V AC

PART NO. CODE:
SAT003 - N X X - X X
① ② ③ ④ ⑤ ⑥


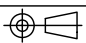
- SERIES:
SAT003: SATA CONN, 7+15P
VERTICAL, SMT TYPE
- POSITIONS:
N: 22 POSITIONS
- INSULATOR COLOR:
K: BLACK
W: WHITE
- CONTACT PLATING:
1: Au 1u"
2: Au 3~5u"
4: Au 15u"
5: Au 30u"
- ENVIRONMENT:
O: RoHS
H: HALOGEN FREE
- WAY OF PACKING:
T: TRAY
R: TAPE & REEL
B: WATERPROOF BAG



P.C.B. LAYOUT (TOP VIEW)(T=1.0 mm)

BILL OF MATERIAL :

3	CLASP	2	BRASS	PLATING TIN
2	CONTACT	22	PHOSPHOR BRONZE	PLATING GOLD
1	HOUSING	1	THERMOPLASTIC	N/A
ITEM	PART NAME	Q'TY	MATERIAL	FINISH

GENERAL TOLERANCES (UNLESS SPECIFIED) DIMENSION STYLE : MM < INCH >	FINISH	SEE NOTES	
	MATERIAL	SEE NOTES	
4 PLACES ± --- ± ---	DRAWN BY	DATE	TITLE SATA CONNECTOR, 7+15PIN, VERTICAL, SMT TYPE
3 PLACES ± 0.05 ± ---	R. Ly	06-01-12	
2 PLACES ± 0.13 ± 0.5°	CHECKED BY	DATE	SIZE A4
1 PLACES ± 0.25 ± 1.0°	A. TENG	06-01-12	DRAWING NO. SAT003-NXX-XX
0 PLACES ± 0.38 ± 2.0°	APPROVED BY	DATE	SCALE NONE
 THIRD ANGLE PROJECTION	---	---	SHEET 1 OF 1
			REV. A